

# MAXPRO<sup>®</sup>

## CORPORATE EDITION

### Video Management System

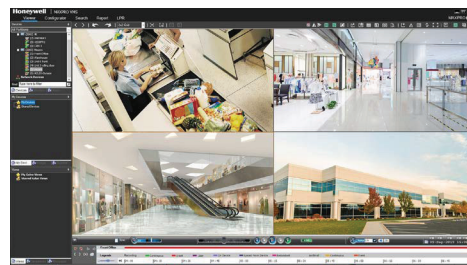
Honeywell MAXPRO Corporate Edition (CE) is the latest offering which intelligently combines the features of NVR and VMS in single hardware server machine. This helps to reduce the Total Cost of Ownership by curtailing the infrastructure needs and lowering the maintenance needs.

MAXPRO CE is based on client-server architecture for maximum flexibility, customization and integration. The MAXPRO CE client enables the monitoring of sites and the configuration of video devices such as cameras, monitors, keyboards, etc. The MAXPRO CE server consists of the MAXPRO framework controller and database, and other core components.

MAXPRO CE supports emerging technologies in the industry, like 4K resolution, H.265 smart video compression codec, multi-imager cameras and fisheye cameras. Customers can fully utilize the advantages of superb video quality with four times the details over 1080p HD, 30%~50% less storage expense (when compared to H.264 compression), and seamless 180° and 360° surrounding surveillance. Furthermore, MAXPRO supports integration with various Honeywell 30/35/60/70/HEI/HTI series of IP cameras. The advanced camera features, like "Click & Drag" 3D PTZ control, license plate recognition, intelligence events and bounding boxes on objects detected by specific video analytics, help surveillance operators to efficiently protect people, property and services.

Pre-installed with OS and MAXPRO application supports simultaneous recording, live monitoring, search and system management for up to 512 IP cameras.

MAXPRO CE is also highly scalable by integration with MAXPRO VMS so users can easily expand their video surveillance network from small to medium single instances to enterprise level supporting thousands of devices.



MAXPRO Client



### MARKET OPPORTUNITIES

MAXPRO VMS is ideal for facilities requiring server optimization with video management solution and network video recorder features in single box. It is a perfect solution for wide variety of applications including commercial buildings, healthcare clinics, retail, property management and many others.

MAXPRO CE products contain no content or material from any companies or their subsidiaries prohibited under US National Defense Authorization Act (NDAA) Section 889 and can be used as part of video systems which comply with NDAA Section 889.

### CYBER SECURITY FEATURES

- Enhanced password security: non-recoverable passwords, enforcing complex passwords, password expiry, no default passwords
- Restricted folder and registry access to operators
- Secure communications with IP cameras using TLS1.2 encrypted video streams
- Secured assemblies – digital signing
- Support for digest authentication in multicast stream between camera and MAXPRO VMS client
- Addressed unauthenticated/ unauthorized channels
- Secured web client – enabled HTTPS and TLS 1.2; protection from CSRF and XSS attacks
- Secured by Default cybersecurity certification for MAXPRO application and TPM2.0 chipset for Honeywell hardware appliance

# MAXPRO® CE Video Management System

## FEATURES

### **Scalable security system for flexible deployment**

- A single MAXPRO CE can support up to 64/128/256 channels.
- Distributed architecture in the form of multiple MAXPRO CE with MAXPRO VMS in a parent-child topology facilitates "Enterprise" style deployment, where child CE server users & roles, workstations, sites, and partitions can be easily added to parent VMS server through advanced discovery

### **Open integrated platform for end-to-end solution**

- Auto-discovery of cameras connected to supported recorders
- Honeywell H.265, multi-imager and explosion-proof camera support
- Support for various Honeywell 30/35/60/70/HEI/HTI series of IP Cameras
- Integration with Honeywell Pro-Watch® and WIN-PAK® Access Control Systems providing an integrated access control and video solution

### **Smart search, playback and clip export for efficient forensic investigation**

- Ability to investigate events and alarms by simultaneously viewing alarm video at various stages. For every alarm, users can view the video captured during pre-alarm, on-alarm, post-alarm, and also view live video from the camera which triggered the alarm through a single 2x2 salvo
- Commentable bookmarks allow users to tag scenes of interest in the timeline to easily return to the scene with multiple cameras' views
- Search and find video through event view or timeline. Preview search allows viewing a snapshot at various times to quickly narrow the scene of interest
- Smooth reverse and synchronous playback for efficient investigation
- Incident management mode allows creating a package of clips multiple cameras at different times that can be played back sequentially
- Fast search by date/time, enhanced time line, time jump, bookmarks, SMART Motion search, calendar, preview, film strip view and events. Increase productivity with more efficient search/investigation: Get to the relevant video in few clicks without having to review hours of recordings.
- SMART Motion search – Fast and efficient forensic search and investigation for objects/motion on recorded video using Honeywell SMART motion detection Analytics algorithms on the Client PC without impacting the NVR Server load.

- Capture and export clips and still images in simple .wmv, .asf, .mpvc, .smpvc and .bmp formats. Clips (.wmv) signed with digital signature for authentication.
- MAXPRO Video Container (.mpvc), Secure MAXPRO Video Container (.smpvc) format support - only playable in MAXPRO desktop clients and standalone Clip Player, quicker exports of raw video and support for estimating clip size and split to multiple clips to ensure clip storage media matches, include clip player with exported clip for easier review of video evidence and efficient investigation.
- Clip Player - Portable standard secure player for archived and exported clips (\*.mpvc, \*.smpvc), 360 camera de-warping and 2x2 Salvo support, Smooth playback support with up to 256x review speed, No software installation required to run on a Windows PC, option to include with clip export.
- NVIDIA and Intel GPU based rendering support for H.264 and H.265 decoding up to 60 frames per second (1080p camera) with smooth display on 4K monitors reduces the number of workstations needed for monitoring large sites with 30+ cameras
- Ability to play recorded video together with audio stream and ability for operators to talk to camera audio output through bi-directional audio support
- Control any analog or digital monitor from a single workstation or joystick keyboard. Allows the system to be used as a true analog and digital matrix
- Monitor control allows controlling all monitors from a single client (monitor wall control)
- Remote monitor mode allows sharing and controlling a remote monitor while still viewing locally

### **Intelligent analytics for proactive threat detection and operation efficiency boost**

- Intelligent events from cameras can be viewed at the alarm panel and trigger event recording on MAXPRO recorder for further investigation
- Honeywell Video Analytics (HVA) integration with automatic camera stream selection for optimal performance
- Integration with augmented vision face recognition analytics from Idemia
- License plate recognition event management with rich details and easy report generation for efficient vehicle management with Honeywell VehicleTrace™ enabled cameras

### **Powerful desktop clients for enhanced monitoring and fast response**

- Viewing, creating, saving and naming salvos with up to 8x8 cameras each under My Salvos or Shared Salvos. Support for aspect ratio - 16:9, 4:3 and stretched for video salvos
- Surrounding cameras mode with presets, makes following subjects of interest simple and efficient by allowing the nearest camera of interest to be immediately in view
- Quick and responsive alarm actions can be initiated from the preview pane options
- Innovative "One-Click" or "Mouse Drag" 3D PTZ control experience that does away with legacy PTZ controls of continuous clicking
- 360° de-warping "spreads" the distorted fisheye image into natural panoramic and/or multiple tile views. Operators can view and focus on zones of interest on live and recorded video
- Enriched video viewing experience through intuitive video rendering engine optimizes CPU utilization by altering the video frame rate for low bandwidth throttling

### **Unified mobile apps**

- Unified mobile apps for iOS® and Android™ allows to access cameras and doors from one single point while on the move

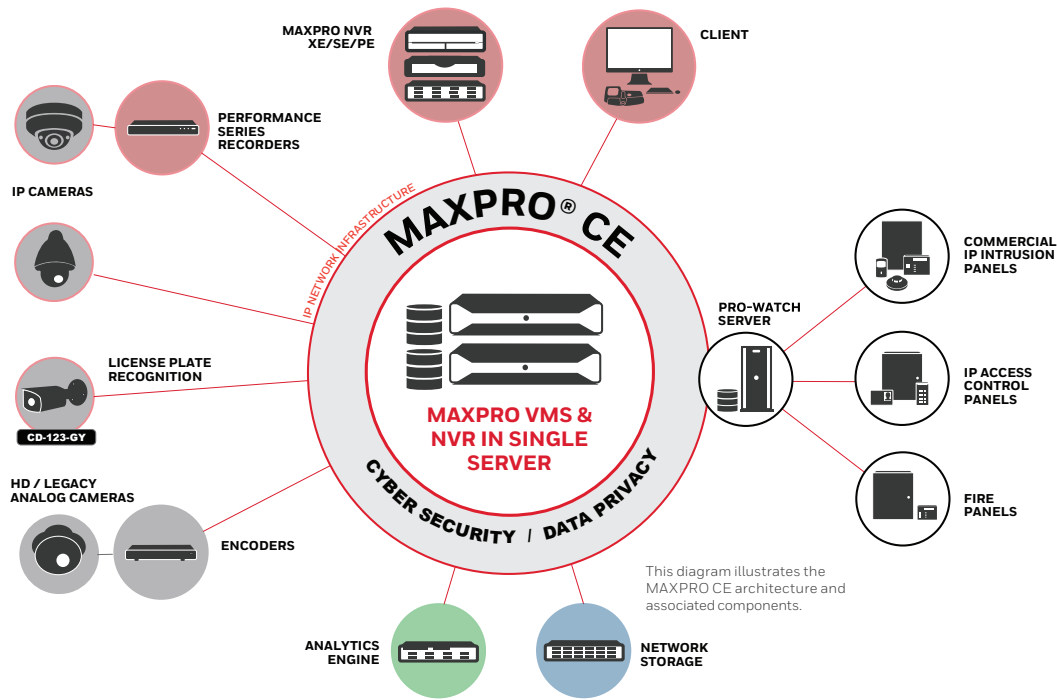
### **Intuitive graphical user interface for efficient site management**

- Feature-rich and user-friendly client interface to view video from numerous different cameras from a single point
- Operators can log on using their local language and the built-in messaging system allows operators to share video scenes via instant messages
- Role-based operator privileges
- An extremely powerful macro programming language is available to fully customize actions based on events
- Support for active directory user authentication
- Status Monitor – Save operational costs with an integrated Dashboard to easily monitor the health and recording status of the NVR from any workstation or PC in the network.

### **Effective privacy protection options for data privacy compliance**

- Body pixilation and blurring in live view to protect customer and employee privacy from abuse of surveillance data
- Four-eye dual user authentication for playback of original video record, for example, with simultaneous logon from two groups of managers and worker' council representatives
- Selective unmasking for clip export of selected cameras and date/time with only the face of a person of interest unmasked while other people's faces are anonymized

# MAXPRO® CE Video Management System



**TABLE 1. HARDWARE SPECIFICATIONS**

MAXPRO CE Server Specs	HNMCE64IAXXTX Up to 64 Channels	HNMCE128IAXXTX Up to 128 Channels	HNMCE256IAXXTX Up to 256 Channels
PROCESSOR	Intel® Xeon® E-2336 2.9GHz	Intel® Xeon® 4310 2.1GHz	Dual Intel® Xeon® 4310 2.1GHz
OPERATING SYSTEM	Microsoft Windows® Server IoT 2019 64-bit		
VIRTUAL ENVIRONMENT	Microsoft Hyper-V™		
DATABASE	Microsoft SQL® 2019 Express		
COMPUTER TYPE	Server, Tower	Server, Rack	
POWER SUPPLY	110/220 VAC 50/60 Hz, 300W, Single PSU	110/220 VAC 50/60 Hz, 800W, Dual hot plug PSU	
DIMENSIONS (HXWXD)	6.88 in x 14.17 in x 17.86 in (175 mm x 360 mm x 453.75 mm)	3.41 in x 18.97 in x 28.72 in (86.8 mm x 482 mm x 721.69 mm)	
WEIGHT	25.74 lbs (11.68 kg) including HDD	54.67 lbs (24.80 kg) including HDD	63.40 lbs (28.76 kg) including HDD
OPERATING TEMPERATURE	5° to 35° C (41° to 95° F)		
SYSTEM MEMORY (RAM)	32 GB	48 GB	64 GB
DISK FOR OS	1x M.2 480GB	2x M.2 480GB with RAID1	
DISK FOR VIDEO RECORDING	4 Bays, Max 20TB each Total of 80TB with RAID 0/1/5/6/50/60	8 Bays, Max 20TB each Total of 160TB with RAID 0/1/5/6/50/60	12 Bays, Max 20TB each Total of 240TB with RAID 0/1/5/6/50/60
MONITOR PORT	1 X VGA		
NETWORK CONNECTION	2 X 1GBPS	4 x 1Gbps	
HARDWARE CYBERSECURITY	TPM2.0		

**TABLE 2. RECOMMENDED WORKSTATION SPECIFICATIONS**

MAXPRO VMS Minimum Workstation Specs	2 Monitor Workstation	4 Monitor Workstation
PROCESSOR	Intel® Core™ i7-10700	
OPERATING SYSTEM	Microsoft Windows® 10 Enterprise 64-bit	
SYSTEM MEMORY (RAM)	16 GB	
DVD DRIVE	DVD +/- RW	
DISK	500 GB 7200RPM SATA3	
VIDEO ADAPTER	Integrated Intel UHD graphics 630	Integrated Intel UHD graphics 630 and NVIDIA Quadro P620
NETWORK CONNECTION	1 Gbit/sec or greater	

# MAXPRO® CE Video Management System

**TABLE 3. ORDERING INFORMATION – MAXPRO CE**

**Software and Licenses**

**MPCESW16** MAXPRO CE Base Software: includes licenses for 16-channel interface to MAXPRO NVR and MAXPRO VMS, includes license for 10 MAXPRO Client

<b>MPCESW16UP</b>	MAXPRO CE Software Upgrade: includes 16-channel license upgrade, up to max of 256* Channels per MAXPRO CE Base Software.
-------------------	--------------------------------------------------------------------------------------------------------------------------

<b>SSAHNMVMS</b>	Annual software support agreement - MAXPRO VMS Base software
------------------	--------------------------------------------------------------

**MAXPRO Client License – One license per connected workstation (Client application can run multiple instances)**

<b>HNMSWCL</b>	MAXPRO View - single client license
----------------	-------------------------------------

**TABLE 4. MAXPRO CE HARDWARE**

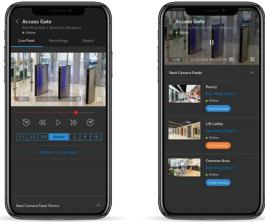
**Server and Workstations**

<b>HNMCE64IA00T0</b>	MAXPRO VMS CE, Upto 64 Channel, No HDD, 4 Bays
<b>HNMCE64IA24T8</b>	MAXPRO VMS CE, Upto 64 Channel, 3 x 8 TB, RAID 5
<b>HNMCE64IA32T8</b>	MAXPRO VMS CE, Upto 64 Channel, 4 x 8 TB, RAID 5
<b>HNMCE64IA48T16</b>	MAXPRO VMS CE, Upto 64 Channel, 3 x 16 TB, RAID 5
<b>HNMCE64IA64T16</b>	MAXPRO VMS CE, Upto 64 Channel, 4 x 16 TB, RAID 5
<b>HNMCE64IA80T20</b>	MAXPRO VMS CE, Upto 64 Channel, 4 x 20 TB, RAID 5
<b>HNMCE128IA00T0</b>	MAXPRO VMS CE, Upto 128 Channel, No HDD, 8 Bays
<b>HNMCE128IA24T8</b>	MAXPRO VMS CE, Upto 128 Channel, 3 x 8 TB, RAID 5
<b>HNMCE128IA32T8</b>	MAXPRO VMS CE, Upto 128 Channel, 8 x 8 TB, RAID 5
<b>HNMCE128IA64T8</b>	MAXPRO VMS CE, Upto 128 Channel, 8 x 8 TB, RAID 5
<b>HNMCE128IA64T16</b>	MAXPRO VMS CE, Upto 128 Channel, 4 x 16 TB, RAID 5
<b>HNMCE128IA128T16</b>	MAXPRO VMS CE, Upto 128 Channel, 8 x 16 TB, RAID 5
<b>HNMCE128IA80T20</b>	MAXPRO VMS CE, UPTO 128 CHANNEL, 4 X 20 TB, RAID 5
<b>HNMCE128IA160T20</b>	MAXPRO VMS CE, UPTO 128 CHANNEL, 8 X 20 TB, RAID 5
<b>HNMCE256IA00T0</b>	MAXPRO VMS CE, Upto 256 Channel, No HDD, 12 Bays
<b>HNMCE256IA128T16</b>	MAXPRO VMS CE, UPTO 256 CHANNEL, 8 X 16 TB, RAID 5
<b>HNMCE256IA160T20</b>	MAXPRO VMS CE, UPTO 256 CHANNEL, 8 X 20 TB, RAID 5
<b>HNMCE256IA192T16</b>	MAXPRO VMS CE, UPTO 256 CHANNEL, 12 X 16 TB, RAID 5
<b>HNMCE256IA240T20</b>	MAXPRO VMS CE, UPTO 256 CHANNEL, 12 X 20 TB, RAID 5

\* Hardware server machine capacity dependent too.

# MAXPRO® CE Video Management System

DOWNLOAD MOBILE APP



**HONEYWELL  
SECURE**

View live and recorded video, manage alarms and overall site security.



## For more information,

[www.honeywellbuildings.in](http://www.honeywellbuildings.in)

Call: 000-8000-502167

Email: [HBT-IndiaBuildings@Honeywell.com](mailto:HBT-IndiaBuildings@Honeywell.com)

## Honeywell HBT India Buildings

Unitech Trade Center, 5th Floor, Sector-43, Block C, Sushant Lok Phase - I, Gurgaon - 122 002

[www.honeywell.com](http://www.honeywell.com)

Microsoft®, Windows™, Hyper-V®, Windows Server®, SQL Server® are trademarks or registered trademarks of Microsoft, Inc. in the United States and other countries.

IOS is a trademark or registered trademark of Cisco in the United States and other countries.

Android™ is a trademark or registered trademark of Google LLC in the United States and other countries.

Intel®, Xeon®, and Core™ are trademarks or registered trademarks of Intel Corporation or its subsidiaries in the United States or other countries.

ADPRO®, IntrusionTrace™ and Xtralis™ are trademarks of Xtralis Inc. in the United States and other countries.

Pro-Watch®, MAXPRO®, Active Alert®, VehicleTrace™, and equip® are trademarks or registered trademark of Honeywell International Inc. in the United States, Australia and other countries.

Honeywell reserves the right, without notification, to make changes in product design or specifications.

HSV-MPCE-02-EN-IN(0124)DS  
© 2024 Honeywell International Inc.

**Honeywell**