

VS8 SERIES 2-WAY/ 3-WAY FCU CONTROL VALVE

SCOPE OF APPLICATION

VS8 series FCU control valves can be used in residential and office buildings to control the continuity of cold and hot fluids. The FCU control valve is made up of two parts: electric actuator and valve body.

VS8 series FCU control valve offers a wide range of voltages and screw thread connection standards for different regions. There are two-way and three-way valves to cover most of the building control applications.



Technical Specification

Actuator

Operating Voltages:	220Vac±10%, 110Vac±10% 24Vac±10% 50/60Hz
Control mode	Spring Return, Port "A" - Open
Working temperature:	0~50°C
Working relative humidity	10%~90%RH, non-condensating
Power consumption:	≤7VA
Leak-rate:	0.05%Kvs
Nominal Timing	Open: ≤20s Shut: ≤15s
Protection rating:	IP20

Valve

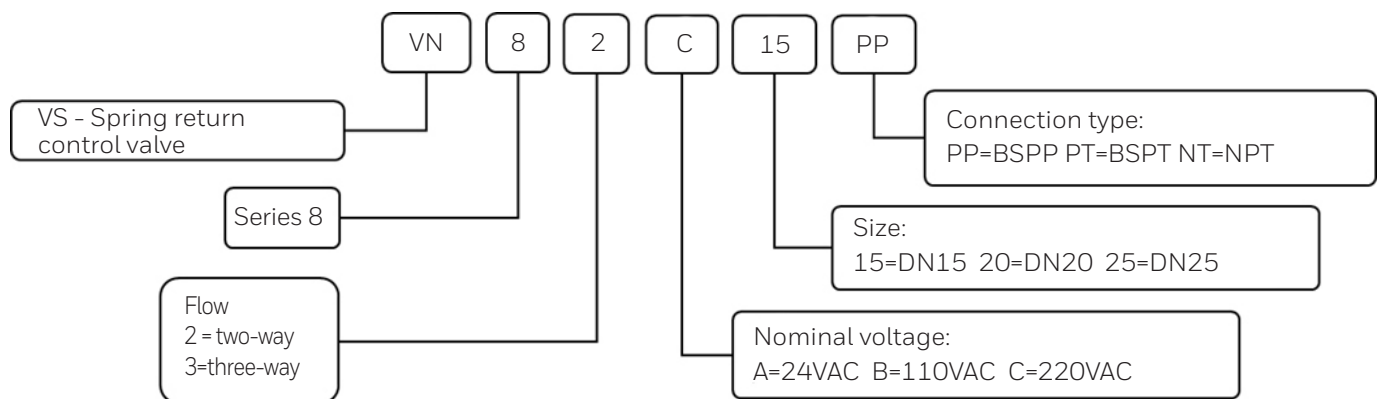
Applicable medium	cold or hot water or 50% glycol solution
Fluid temperature:	0~94°C
Operating temperature	0~50°C
Nominal pressure	PN20
Leakage rate:	0.05%kvs
Materials	Valve body: HPb59-2 Valve rod: HPb59-2 Valve flap: EPDM

Ordering Part Numbers

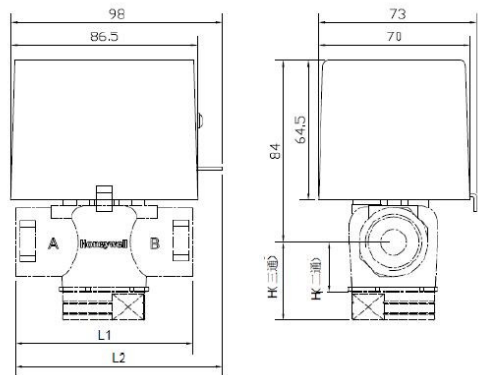
Part Number	Voltage	Flow	Size (diameter)	Connection Type	Nominal Flow Rating (Kvs)	CLOSE-OFF (PSI)
VS82C15PP	220Vac±10%	2	DN15, 1/2"	BSPP	1.7±10%	65
VS82C15PT	220Vac±10%	2	DN15, 1/2"	BSPT	1.7±10%	65
VS82C15NT	220Vac±10%	2	DN15, 1/2"	NPT	1.7±10%	65
VN82C20PP	220Vac±10%	2	DN20, 3/4"	BSPP	2.3±10%	50
VN82C20PT	220Vac±10%	2	DN20, 3/4"	BSPT	2.3±10%	50
VN82C20NT	220Vac±10%	2	DN20, 3/4"	NPT	2.3±10%	50
VN82C25PP	220Vac±10%	2	DN25, 1"	BSPP	3.1±10%	30
VN82C25PT	220Vac±10%	2	DN25, 1"	BSPT	3.1±10%	30
VN82C25NT	220Vac±10%	2	DN25, 1"	NPT	3.1±10%	30
VN83C15PP	220Vac±10%	3	DN15, 1/2"	BSPP	1.7±10%	65
VN83C15PT	220Vac±10%	3	DN15, 1/2"	BSPT	1.7±10%	65
VN83C15NT	220Vac±10%	3	DN15, 1/2"	NPT	1.7±10%	65
VN83C20PP	220Vac±10%	3	DN20, 3/4"	BSPP	2.7±10%	50
VN83C20PT	220Vac±10%	3	DN20, 3/4"	BSPT	2.7±10%	50
VN83C20NT	220Vac±10%	3	DN20, 3/4"	NPT	2.7±10%	50
VN83C25PP	220Vac±10%	3	DN25, 1"	BSPP	3.5±10%	30
VN83C25PT	220Vac±10%	3	DN25, 1"	BSPT	3.5±10%	30
VN83C25NT	220Vac±10%	3	DN25, 1"	NPT	3.5±10%	30

Note: For other models, please consult our product department

Product Identification System

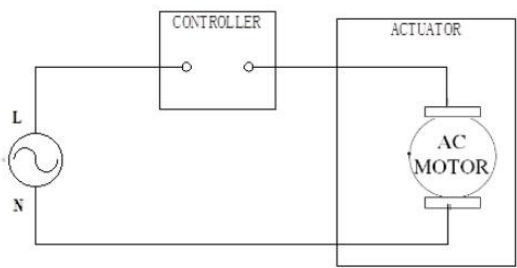


DIMENSION (mm)



Part Number	DIMENSION (mm)		
	L1	L2	H
VS82X15XX	64	87	23
VS82X20XX	82	96	23
VS82X25XX	88	99	26
VS83X15XX	64	87	30
VS83X20XX	82	96	36
VS83X25XX	88	99	41

WIRING DIAGRAM



For more information,
<https://honeywellbuildings.in>
 Call: 1-800-103-0339
 Email: HBT-Indiabuildings@honeywell.com

Honeywell HBT India Buildings
 Unitech Trade Center, 5th Floor, Sector-43,
 Block C, Sushant Lok Phase - I,
 Gurgaon - 122 002