

H6000 HUMIDITY CONTROLLER

- Long nylon ribbon sensing element provides high driving force to assure reliable operation, even under changing ambient temperature conditions.
- Housing encloses the snap-acting switch with ¼ in. quick-connect terminals. Switch rated for line voltage and pilot operation.
- Shaft for adjusting the control point located on top of the device.
- Positive ON and OFF setting positions permit manual operation of the controlled equipment.



SYSTEM OVERVIEW

These Humidity Controllers provide Automatic Switching control of Humidification or Dehumidification equipment. They are typically used in appliance units such as portable Humidifiers and dehumidifiers, Furnace powered Humidifiers, Fan ventilation units etc.

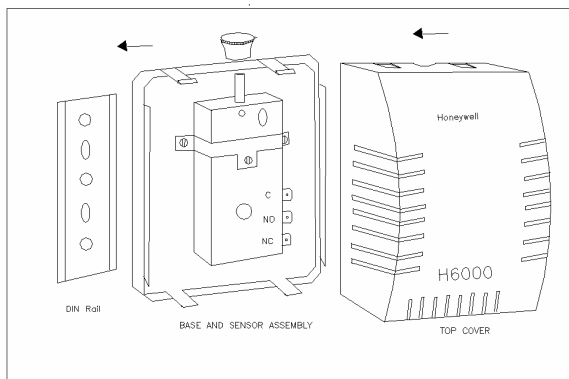


FIG.1 TYPICAL ASSEMBLY

Technical Specification

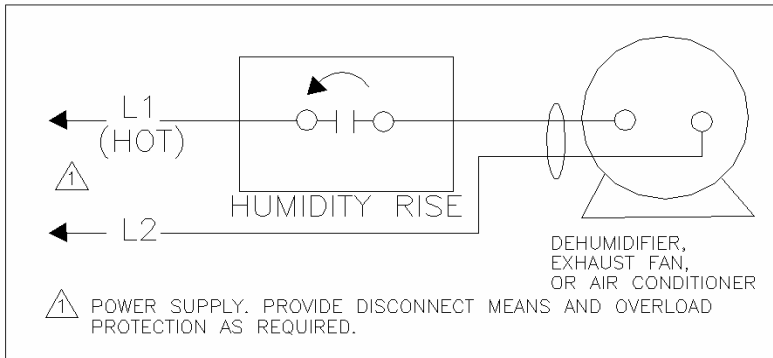
| | |
|------------------------------|---|
| Switching: | Spdt Snap-acting dustproof switch |
| Pilot Duty: | 50 VA at 24V, 120 VA at 120V or 240V |
| Relative Humidity Range | 20 to 80 percent |
| Maximum Ambient Temperature: | 52 DegC. |
| Setpoint Adjustment: | Removable Knob. |
| Cover: | Plastic Locking Cover |
| Mounting | DIN Rail mounting |
| Dimensions | approximately 80mm (W)X 95mm (H)X35mm (D) |

Electrical Ratings:

| | Dehumidifier 240 VAC | Humidifier 240 VAC |
|--------------|-------------------------|-----------------------|
| Full Load | 3.85 | 2.2 |
| Locked Rotor | 22.8 | 13.2 |
| Resistive | - | 4.0 |

Installation

1. Read these Instructions carefully. Failure to follow them could damage the product or cause a hazardous condition
2. Check the ratings given in the instructions and on the product to make sure the product is suitable for your application.
3. Installer must be a trained, experienced service technician.
4. After installation is complete, check out product operation as provided in these instructions.



CAUTION

Disconnect power supply before beginning installation to prevent electrical shock or equipment damage.

MOUNTING

The H6000 mount in the intake air stream of a humidifier or dehumidifier. Do not mount in outlet air.

Mount the DIN rail with self-tapping screws and snap in H6000 on the DIN rail.

WIRING

All wiring must comply with local codes and ordinances. Refer FIG.2.

OPERATION

The H6000 switch makes contact on a relative humidity rise to the set point to start dehumidifier. A decrease in relative humidity to the set minus the differential breaks the switch contact to stop the dehumidifier.

Turn the knob clockwise to the setting stop to put the dehumidifier in the ON position. Set to the OFF position by turning the control knob counterclockwise to the Stop.

For more information,

<https://honeywellbuildings.in>

Call: 1-800-103-0339

Email: HBT-Indiabuildings@honeywell.com

Honeywell HBT India Buildings

Unitech Trade Center, 5th Floor, Sector-43,
Block C, Sushant Lok Phase - I,
Gurgaon - 122 002