

# **SIMPLIFY, ROUTE & ORGANIZE** **FOR TROUBLE- FREE CABLING**

Streamlined Power Distribution  
and Connectivity

---

Cable Management System

---



**Honeywell**

# CONTENT

---

<b>WALL/PERIMETER .....</b>	<b>04</b>
• PRESTIGE 3D .....	06
• PRESTIGE 3D ANTIBAC.....	09
• PRESTIGE 2COM .....	12
• PREMIER SYSTEMS .....	14
• MINI TRUNKING.....	18
<b>FLOOR DISTRIBUTION SYSTEM .....</b>	<b>20</b>
• UNDERFLOOR SYSTEM .....	22
• ACCESS OUTLET BOX.....	28
• RAISED FLOOR ACCESS OUTLET BOX.....	30
<b>DESK CABLE MANAGEMENT .....</b>	<b>42</b>
• POP UP BOX.....	44

A modern office interior with glass partitions and track lighting. A red rectangular overlay covers the middle section of the image, containing text.

## **CABLE MANAGEMENT SYSTEM RANGE**

Ease of installation, maintenance, efficiency, safety, and flexibility in use are crucial to the optimal layout of power, data and telecom cables. The Honeywell Cable Management System range provides effective and end-to-end solutions for both Wall and Floor based cabling. The range enables installations to be planned and executed to address various layout requirements. It is a complete system that provides ideal solutions for the distribution of cables, and access to power, data and communication services on the Wall, under the Floor and Desk.

**#OrganizedCabling**



# WALL/PERIMETER

Organize Your Wall-Mounted Cabling for  
Aesthetics, Safety and Efficiency





# PRESTIGE 3D

## Versatile Three Compartment Dado Trunking

The Honeywell Prestige 3D Cable Management Solution enables gen-next three compartment uPVC trunking with greater depth to cater for diverse cabling requirements. Prestige 3D is a feature-rich solution that comes with accessories like Flat Angles and Tees, for easier installation and improved cable management.



### FEATURES



Greater trunking depth to cater for Cat 6 structured cabling systems, supports 45 mm deep back boxes



Flexible Internal and External Corners allows for poor building tolerances



Divider Knockouts, making wiring easier and faster with no drilling or cutting



Two stage Hinge Lids enables cables to be supported by the trunking cover during installation, and makes retro installation of additional cables more simple

PRESTIGE 3D	
Product Code	VP180WHI / VP100WHI / VP110WHI
Standard Length	3 Metres
Trunking Size	170mm (H) x 57mm (D)
Material	uPVC
Colour	White

## ACCESSORIES



**Main Carrier**  
VP180 WHI  
3 Metre Length



**Straight Cover**  
VP100 WHI  
3 Metre Length



**Curved Cover**  
VP110 WHI  
3 Metre Length



**Flexible Internal Corner**  
VP181 WHI



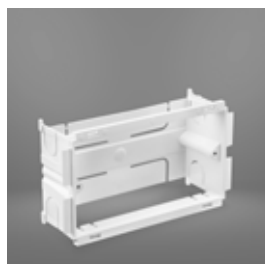
**Flexible External Corner**  
VP182 WHI



**End Cap**  
VP183 WHI



**4 M Conversion Frame**  
VP129 WHI



**4 Module Mounting Box**  
VP122 WHI



**6 Module Mounting Box**  
VP123 WHI



**Joint Cover**  
VP184 WHI



**Flat Angle**  
VP185 WHI



**Flat Tee**  
VP187 WHI

## PRESTIGE 3D

TECHNICAL SPECIFICATION		
CE Marking	All relevant Honeywell products in this brochure are CE marked, confirmation that they meet the EMC and LV directives.	
Manufacture	All trunking components are manufactured from uPVC.	
Appearance	Prestige 3D is manufactured in white. The trunking surface can be painted, if required, after installation.	
Performance	Impact	Medium
	Minimum Storage Temperature	25°C
	Minimum Installation Temperature	-5°C
	Maximum Application Temperature	+60 C
Fire performance	The uPVC materials used in the manufacture of Honeywell products are non-flame propagating in accordance with BS EN 50085-1:1999 and BS EN 61386-1:2004. Extrusion material has achieved classification 1Y in accordance with BS 476-7:1997. Moulding material has achieved 650°C glow wire rating in accordance with BS EN 60695-2-11:2001.	
Thermal properties	Prestige 3D trunking is designed to accommodate local thermal expansion. Fitting instructions explain the procedure required to deal with the differential movement at the interface with the building fabric.	
	<b>Linear Expansion:</b> 4 mm over every 3000mm with a temperature rise of 25°C	
Chemical resistance	The uPVC materials used are non-corrosive and not affected by seawater. It has excellent resistance to mineral adds, alkalis and detergents, good resistance to alcohols, but is liable to attack from solvents such as ketones, aromatics and hydrocarbons.	
Electrical	Presitge 3D trunking is non conductive.	
	Dielectric strength	40 kv/mm in DBP
		17 kv/mm in tx oil
	Resistivity	1014 cm
Biological	Prestige 3D trunking is resistant to vermin and termites.	
Workability	Presitge 3D trunking is lightweight and can readily be cut and drilled to suit installation needs with hand tools.	
Durability	Prestige 3D trunking is stable and will maintain its performance characteristics in accordance with the terms and conditions described above.	
Maintenance	Clip-on covers with optional screw fix and interchangeable accessories provide continuous accessibility for rewiring, extensions and modifications to an installation. Covers and accessories can be cleaned with water and household detergent. The surface can be decorated with commercial paints if required.	

## PRODUCT RANGE

ITEM CODE	ITEM DESCRIPTION
VP180WHI	Main Carrier Std Length 3 Mtrs
VP100WHI	Straight Cover Std Length 3 Mtrs
VP110WHI	Curved Cover Std Length 3 Mtrs
VP105WHI	Cable Retainer
VP122WHI	4 Module Mounting Box
VP123WHI	6 Module Mounting Box
VP129WHI	Socket Spacer
VP181WHI	Internal Corner
VP182WHI	External Corner
VP183WHI	End Cap (pair)
VP184WHI	Joint Cover (coupler)
VP185WHI	Flat Angle
VP187WHI	Flat Tee
VTS1000	Screw Fixing Kit



# PRESTIGE 3D ANTIBAC BLUE

## Antibacterial Cable Management Solution for Power and Data Distribution

Honeywell is the only manufacturer to offer a complete antibacterial cable management solution. Prestige 3D Antibac Blue. It uses a silver based additive to eliminate MRSA, and Klebsiella Pneumoniae, making it ideal for environments where pathogens need to be limited.



### FEATURES



>99.9% kill rate  
against MRSA and  
Klebsiella Pneumoniae



Unique patented  
fluorescence  
under UV light



Patented Data  
Sweep to maximize  
cable capacity



Fully  
Cat 6  
compliant



Screw fixing kit  
available for  
higher security



Independently  
verified as 40%  
faster to install

## ACCESSORIES



**Main Carrier\***  
VP180WHI



**Straight Cover**  
VPAB100WHI



**Curved Cover**  
VPAB110WHI



**Flexible Internal Corner**  
VPAB181WHI



**Flexible External Corner**  
VPAB182WHI



**End Cap**  
VPAB183WHI



**Joint Cover**  
VPAB184WHI



**Flat Angle**  
VPAB185WHI



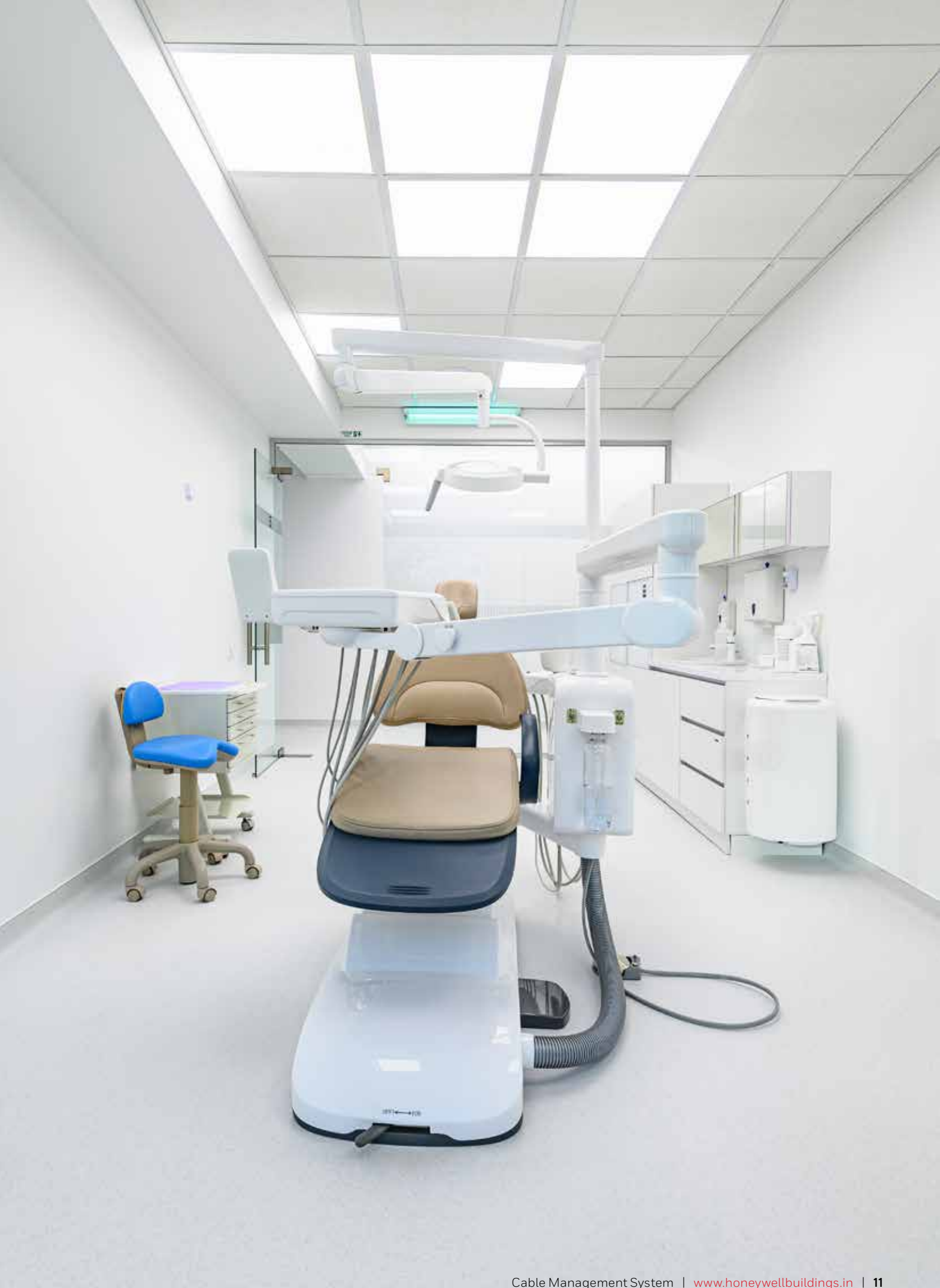
**Flat Tee**  
VPAB187WHI

\*Carrier components do not require the antibacterial additive as they have no exposure once the installation is complete. As such, the standard main carrier is sufficient, as are standard back boxes, mounting frames and cable retainers. The carrier components of the External Corner, Flat Angle and Flat Tee are also standard uPVC due to no exposure once installation is complete.

## PRODUCT RANGE

ITEM CODE	ITEM DESCRIPTION
VPAB100WHI	3D Antibac Straight Cover Std Length 3 Metres
VPAB110WHI	3D Antibac Curved Cover Std Length 3 Metres
VPAB181WHI	3D Antibac Flex Int Corner
VPAB182WHI	3D Antibac Flex Ext Corner
VPAB183WHI	3D Antibac End Cap
VPAB184WHI	3D Antibac Joint Cover
VPAB185WHI	3D Antibac Flat Angle
VPAB187WHI	3D Antibac Flat Tee





# PRESTIGE 2COM

## | Cable Management That Grows Along with Your Needs

The honeywell prestige 2Com cable management solution enables symmetrical two compartment trunking for more flexible cable routing, while maintaining a slow bend radius of 50mm, and a separate compartment for power cables. The covers are of the snap-on type with the option of screw fixing, for enhanced protection against vandalism..



### FEATURES



System bend radius  
50mmExceeds Cat Se, 6 and  
7 data cable requirements



Aesthetic one-piece  
fitting covers with carriers



Two equal compartments  
–maximizes wiring  
compartment capacity



Accessory mounting in either  
or both compartments- giving  
flexibility/versatility



Unobtrusive screw fixing  
covers to maximize security  
against tampering



Ease of installation – butt  
jointed construction,  
no mitring required





Pre-drilled base - ease/  
speed of installation



Accommodates Honeywell  
switches and sockets



Strong uPVC sections are  
resistant to impact



Manufactured to high  
precision standards



Full range of components,  
spares and accessories



All extrusions manufactured  
from recycled material

## PRESTIGE 2COM

TECHNICAL SPECIFICATION	
Material	All components are manufactured from uPVC.
	Carriers, covers, and cable dividers are extruded.
	Carrier couplers, corner carriers, stop ends and accessory boxes are formed by injection Moulding.
Colour	The system is available in a standard white colour.

## PRODUCT RANGE

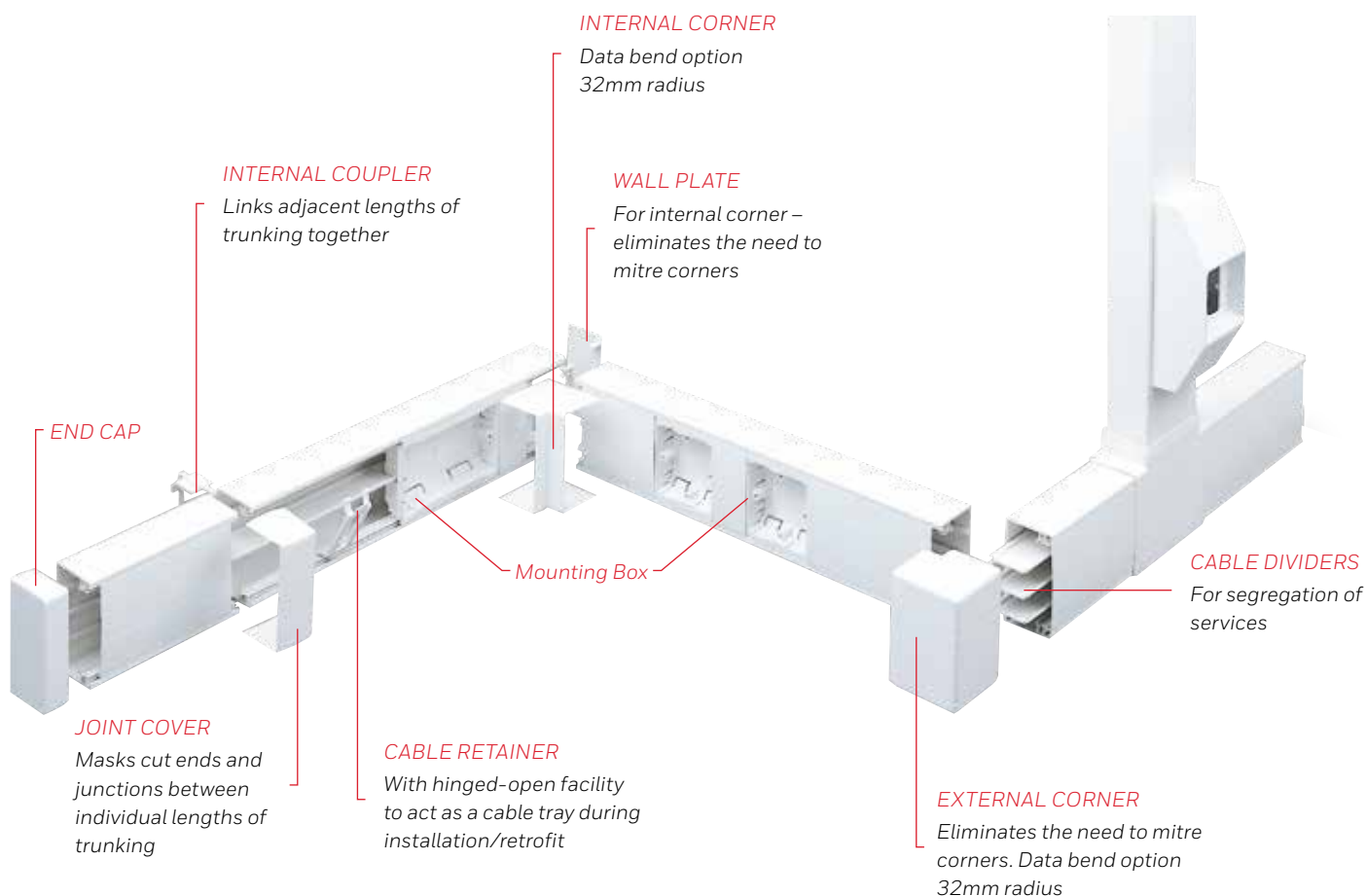
ITEM CODE	ITEM DESCRIPTION
VTS2001WHI	Main Carrier Std L-3 Mtrs (210x60 mm)
VTS2006WHI	End Cap Assembly
VTS5WHI	Straight Cover Std L-3 Mtrs (210x60 mm) 250
VTS6000WHI	1 Gang Socket Mounting Frame
VTS6035WHI	1 Gang 35mm Deep Mounting Box
VTS7000WHI	2 Gang Socket Mounting Frame
VTS7035WHI	2 Gang 35mm Deep Mounting Box
VTS2004WHI	Internal Corner Assembly
VTS2003WHI	External Corner
VTS2010WHI	Lid Joint Cover
VTS2011WHI	Cable Retainer
VTS2014WHI	Flat Tee 90Deg
VTS2012WHI	Flat Angle 90Deg
VTS50WHI	Cable divider
VTS1000	Screw Fixing Kit



# PREMIER SYSTEMS

## | Advanced Integrated Cable Management

The Honeywell Premier Systems Cable Management Solution is an advanced cable distribution system that provides integrated support for power, data and communication services throughout a building. The system supports surface mounting and includes standard tees, angles, joints and four-way junctions. It includes specially designed mounting boxes and snap fit frames that accept standard Honeywell Wiring Accessories and include telecom and data outlets. Premier Systems come with clip-on dividers, which allow users to create multiple compartments to address more complex cabling needs.



## FEATURES



Premier has a wide range of integrated components that maximize the versatility of applications.



The system has specially made mounting boxes and snap fit frames that fit the profile throughout the length. These boxes accept Wiring Accessories making easy installations.



Premier can be sub-compartmentalized, using clip-on cable dividers and retainers, integrating multiple services safely and efficiently



RoHS Compliant

PREMIER SYSTEMS	
Product Code	NCT1050D1WHI 100mm(H) x 50mm(D) - 4 Compartments* / NCT5050D1WHI 50mm(H) x 50mm(D) - 2 Compartments* *4 Compartments (Maximum 3 cable dividers can be used) / *2 Compartments (Only Single cable divider can be used)
Standard Length	2 Metres
Material	uPVC
Colour	White
Thickness	2.5mm

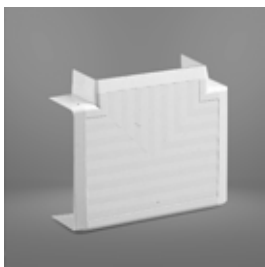
## ACCESSORIES



**Trunking 2 Metre**  
NCT1050D1WHI  
100(H) x 50(D)mm



**Trunking 2 Metre**  
NCT5050D1WHI  
50(H) x 50(D)mm



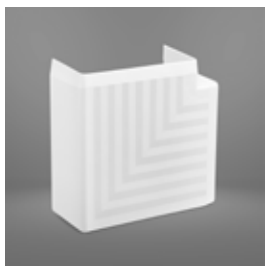
**Flat Tee**  
NTF1050WHI  
NTF5050WHI



**End Cap**  
NEP1050WHI  
NCU5050WHI



**External Angles 90°**  
NAE5050WHI  
NAE1050WHI



**Flat Angles 90°**  
NAF5050WHI  
NAF1050WHI



**Flat Cross**  
NCU5050WHI  
NCU1050WHI



**Joint Cover**  
NJC5050WHI  
NJC1050WHI



**4M Conversion Frame**  
CM104WHI



**6M Conversion Frame**  
CM106WHI



**1 To 3 Module Mounting Box**  
NSB1T3I



**4 To 5 Module Mounting Box**  
NSB4T5I



**8 Module Mounting Box**  
NSB8I

## PREMIER SYSTEMS

TECHNICAL SPECIFICATION		
Chemical Resistance	Premier is non-corrosive and not affected by sea water. It has excellent resistance to mineral acids, alkalis and detergents. Good resistance to alcohol but liable to attack from solvents such as ketones, aromatics and hydrocarbons.	
Electrical	Premier is non-conductive	
	Dielectric Strength	40 kW/mm in DBP
		17 kW/mm in TX Oil
	Volume Resistivity	>10 ohms at 50% RH & 23°C
Thermal Properties	Premier is designed to accommodate local thermal expansion and contraction when installed in accordance with the Installation Guide.	
	Coefficient of linear expansion 5.5 x 10 <sup>-6</sup> per°C (6mm/400mm with a temperature rise of 25°C)	
	Operating temperature	-5°C to 60°C
	Vicat softening point	81°C
	Thermal conductivity	0.19 w/m/°C
Workability	Premier is lightweight and can be readily cut and drilled with hand tools. Covers and accessories are manufactured to fine tolerance to ensure a tight fit with ease of removal.	
Durability	Premier is resistant to vermin and termites. It is stable and will maintain its performance characteristics under the terms and conditions described above.	
Maintenance	Clip-on covers constant accessibility for rewiring extensions and modifications to an installation.	
	Covers and accessories can be cleaned with water and household detergents. The surface can be decorated with commercial paints if necessary.	

Premier Technical Data	Premier Cable Management system is made in accordance with the requirements of BS 4678 Part 4 Heavy Duty Classification and BS 4662.
Manufacture / Fabrication	Trunking and cable dividers are extruded. Internal couplers, stop ends, joint covers, most outside, inside and flat angles, all flat tees, cable retainers and accessory boxes are moulded. Outside and inside tees, flange couplers, reducers, partition wall covers and 45 degree flat, outside and inside angles are factory prefabricated.
Appearance	The extruded components with the exception of lid, have a standard white semi-matt finish. The lid is extruded with a contrasting linear surface pattern. The moulding components are similar in standard white finish, and the lids have a textured finish.
Shape and Size	Premier Trunking is available in both rectangular and square cross sections.
Strength	High impact resistance under normal climatic conditions. Impact strength : 25 KJ/m
	2 Tensile strength : At yield 34.62 N/mm
	2 At break 42.00 N/mm
	Density : 1.35 to 1.45
Fire	The material used are non-flame propagating and a Class 1 spread of flame achieved when tested in accordance with the requirements of BS 476 Part 7.

## APPLICATION AREAS



Educational Institutes



Industry



Government Departments



Heritage Buildings



## PRODUCT RANGE

ITEM CODE	ITEM DESCRIPTION
NCT1050D1WHI	UPVC Trunking 100x50 Std Length 2 Mtrs
NCT5050D1WHI	UPVC Trunking 50x50mm Std Length 2 Mtrs
NVS50D1WHI	Divider 50 Deep Std Length 2 Mtrs
NAE1050WHI	External Angle 100x50
NAE5050WHI	External Angle 50x50
NAF1050WHI	Flat Angle 100x50
NAF5050WHI	Flat Angle 50x50
NAI1050WHI	Internal Angle 100x50
NAI5050WHI	Internal Angle 50x50
NBP100WHI	Cable Retainer 100 Wide
NBP50WHI	Cable Retainer 50 Wide
NCI1050WHI	Internal Coupler 100x50
NCI5050WHI	Internal Coupler 50x50
NCU1050WHI	Flat Cross 100x50
NCU5050WHI	Flat Cross 50x50
NEP1050WHI	End Cap 100x50
NEP5050WHI	End Cap 50x50
NJC1050WHI	Joint Cover 100x50
NJC5050WHI	Joint Cover 50x50
NSB1T3I	Mounting Box 1-3 Mod Premier System
NSB4T5I	Mounting Box 4-5 Mod Premier System
NSB8I	Mounting Box 8 Mod Premier System
NSB3ICW	Mounting Box 3M Suitable for Premier and Prestige 3D
NTF1050WHI	Flat Tee 100x50
NTF5050WHI	Flat Tee 50x50
NCT1010D1WHI	UPVC Trunking 100x100mm 2 Mtrs Std Length
NCI1010WHI	Internal Coupler for 100*100mm
NJC1010WHI	Joint Cover for 100*100mm
NVS100WHI	Cable divider 100mm deep
NEP1010WHI	End cap for 100*100mm
NAE1010WHI	External angle for 100*100mm
NAI1010WHI	Internal angle for 100*100mm
NAF1010WHI	Flat angle 100*100mm
NTF1010WHI	Flat tee 100*100mm



# MINI TRUNKING

## | Contained Cabling for Surface Wiring

The Honeywell Mini Trunking Cable Management Solution provides extruded PVCu mini trunking, to enable surface mounted electrical and data cabling. The solution is ideally suited for refurbishment applications as well as new installation projects, in the domestic as well as commercial sectors. Mini Trunking enables fast installation of power circuits and the secure containment of low voltage wiring.



### FEATURES



Easy to assemble and install



Durable and impact resistant



Speed fix options for reduced installation time



All extrusions manufactured from 90% recycled materials



Accessories include end caps, couplers and angles for support



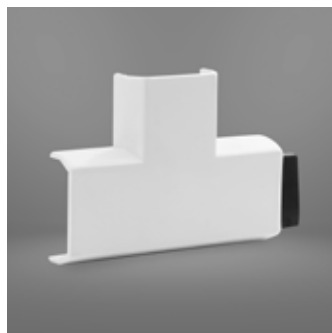
Unique design

MINI TRUNKING	
Standard Length	3mtrs
Size	32mm wide x 12.5mm depth
Material	uPVC

## ACCESSORIES



**Mini Trunking 32x12.5mm  
(3 Mtrs Standard Length)**  
YT200WHI



**Mini Trunking Flat Tee**  
YTF200WHI



**Mini Trunking End Caps**  
YEP200WHI



**Mini Trunking Internal Angle**  
YAI200WHI



**Mini Trunking  
External Angle**  
YAE200WHI

## PRODUCT RANGE

ITEM CODE	ITEM DESCRIPTION
YT200D1WHI	32x12.5mm Trunking Std Length 2 M
YAE200WHI	32x12.5mm External Angle
YAF200WHI	32mmx12.5mm Flat Angle
YAI200WHI	32mmx12.50mm Internal Angle
YEP200WHI	32x12.5mm End Cap
YTF200WHI	32x12.5mm Flat Tee



# FLOOR DISTRIBUTION SYSTEM

| Undercover Cable Management That's Easy to Access







# UNDERFLOOR SYSTEM

## | Corrosion Proof Solution for Effective Underfloor Cabling

The Honeywell Underfloor Cable Management System includes four basic types of equipment, which can together provide a desired underfloor configuration:

- Underfloor Access Outlets
- Underfloor M-Tracks
- Underfloor Cross Overs
- Underfloor Vertical Access Units

The systems are laid on the structural slab prior to the pouring of screed.



### UNDERFLOOR MTRACK/METAL RACEWAYS FEATURES



Specially treated corrosion proof rectangular profiles for high tensile strength



Top and bottom plates are double folded, and spot welded together to give the required rigidity and at the same time to prevent seepage of concrete or screed water



Material: Pre-galvanized sheet steel 275 GSM



Single, double & triple compartments - with triple compartments designed to accommodate power, data, communication and instrumentation cables



Standard  
length: 2.5  
Metres



Mtrack Standard  
height: 25mm  
and 38mm



Single, double  
& triple  
compartments



Jointing Sleeves/  
coupler for 25mm and  
38 mm height mtrack  
which maintains  
earthing continuity



Triple Compartments  
designed to  
accommodate power,  
data, communication and  
instrumentation cables

## ACCESSORIES



**Joint Sleeve**  
JSQB050138



**Joint Sleeve**  
JSQB100238



**Joint Sleeve**  
JSQB300338

## PRODUCT RANGE: UNDER FLOOR TRUNKING

25MM HEIGHT, 1.6MM BASE, 1.6MM LID, 275GSM, LENGTH - 2.5MTR	
ITEM CODE	ITEM DESCRIPTION
UTQB050125	Mtrack 50x25x1.6 - 1Comp 2.5Mtr 275GSM
UTQB075125	Mtrack 75x25x1.6 - 1Comp 2.5Mtr 275GSM
UTQB100125	Mtrack 100x25x1.6 - 1Comp 2.5Mtr 275GSM
UTQB150225	Mtrack 150x25x1.6 - 2Comp 2.5Mtr 275GSM
UTQB225325	Mtrack 225x25x1.6 - 3Comp 2.5Mtr 275GSM
UTQB250325	Mtrack 250x25x1.6 - 3Comp 2.5Mtr 275GSM
UTQB300325	Mtrack 300x25x1.6 - 3Comp 2.5Mtr 275GSM
UTQB350325	Mtrack 350x25x1.6 - 3Comp 2.5Mtr 275GSM
38MM HEIGHT, 1.6MM BASE, 1.6MM LID, 275GSM, LENGTH - 2.5MTR	
UTQB050138	Mtrack 50x38x1.6 - 1Comp 2.5Mtr 275GSM
UTQB075138	Mtrack 75x38x1.6 - 1Comp 2.5Mtr 275GSM
UTQB100138	MTrack 100x38x1.6 - 1Comp 2.5Mtr 275GSM
UTQB100238	MTrack 100x38x1.6 - 2Comp 2.5Mtr 275GSM
UTQB150238	MTrack 150x38x1.6 - 2Comp 2.5Mtr 275GSM
UTQB225338	MTrack 225x38x1.6 - 3Comp 2.5Mtr 275GSM
UTQB250338	MTrack 250x38x1.6 - 3Comp 2.5Mtr 275GSM
UTQB300338	MTrack 300x38x1.6 - 3Comp 2.5Mtr 275GSM
UTQB350338	MTrack 350x38x1.6 -3Comp 2.5Mtr 275GSM

38MM HEIGHT, 1.6MM BASE, 2.0MM LID, 275GSM, LENGTH - 2.5MTR	
ITEM CODE	ITEM DESCRIPTION
UTRB050138	MTrack 050x38x1.6x2 -1Comp 2.5Mtr 275GSM
UTRB075138	MTrack 075x38x1.6x2 -1Comp 2.5Mtr 275GSM
UTRB100138	MTrack 100x38x1.6x2 -1Comp 2.5Mtr 275GSM
UTRB100238	MTrack 100x38x1.6x2 -2Comp 2.5Mtr 275GSM
UTRB150238	Mtrack 150x38x1.6x2 -2Comp 2.5Mtr 275GSM
UTRB225338	Mtrack 225x38x1.6x2 -3Comp 2.5Mtr 275GSM
UTRB250338	Mtrack 250x38x1.6x2 -3Comp 2.5Mtr 275GSM
UTRB300338	Mtrack 300x38x1.6x2 -3Comp 2.5Mtr 275GSM
UTRB350338	Mtrack 350x38x1.6x2 -3Comp 2.5Mtr 275GSM
38MM HEIGHT, 2.0MM BASE, 2.0MM LID, 275GSM, LENGTH - 2.5MTR	
UTSB050138	Mtrack 50x38x2x2 -1Comp 2.5Mtr 275GSM
UTSB075138	Mtrack 75x38x2x2 -1Comp 2.5Mtr 275GSM
UTSB100138	Mtrack 100x38x2x2 -1Comp 2.5Mtr 275GSM
UTSB100238	Mtrack 100x38x2x2 -2Comp 2.5Mtr 275GSM
UTSB150238	Mtrack 150x38x2x2 -2Comp 2.5Mtr 275GSM
UTSB225338	Mtrack 225x38x2x2 -3Comp 2.5Mtr 275GSM
UTSB250338	Mtrack 250x38x2x2 -3Comp 2.5Mtr 275GSM
UTSB300338	Mtrack 300x38x2x2 -3Comp 2.5Mtr 275GSM
UTSB350338	Mtrack 350x38x2x2 -3Comp 2.5Mtr 275GSM

## PRODUCT RANGE: JOINT SLEEVES

25MM HEIGHT, 1.6MM BASE, 1.6MM LID, 275GSM, LENGTH - 75MM	
ITEM CODE	ITEM DESCRIPTION
JSQB050125	Joint Sleeve 50x25x1.6 275GSM
JSQB075125	Joint Sleeve 75x25x1.6 275GSM
JSQB100125	Joint Sleeve 100x25x1.6 275GSM
JSQB150225	Joint Sleeve 150x25x1.6 275GSM
JSQB225325	Joint Sleeve 225x25x1.6 275GSM
JSQB250325	Joint Sleeve 250x25x1.6 275GSM
JSQB300325	Joint Sleeve 300x25x1.6 275GSM
JSQB350325	Joint Sleeve 350x25x1.6 275GSM
38MM HEIGHT, 1.6MM BASE, 1.6MM LID, 275GSM, LENGTH - 75MM	
JSQB050138	Joint Sleeve 50x38x1.6 275GSM
JSQB075138	Joint Sleeve 75x38x1.6 275GSM
JSQB100238	Joint Sleeve 100x38x1.6 275GSM
JSQB150238	Joint Sleeve 150x38x1.6 275GSM
JSQB225338	Joint Sleeve 225x38x1.6 275GSM
JSQB250338	Joint Sleeve 250x38x1.6 275GSM
JSQB300338	Joint Sleeve 300x38x1.6 275GSM
JSQB350338	Joint Sleeve 350x38x1.6 275GSM



# UNDERFLOOR VERTICAL ACCESS UNITS

Vertical Access Units helps to facilitate easy accessibility from Floor Traks to Wall. This is for connections to Distribution boards or other Floors



Vertical Access Units helps to facilitate easy accessibility from Floor Traks to Wall



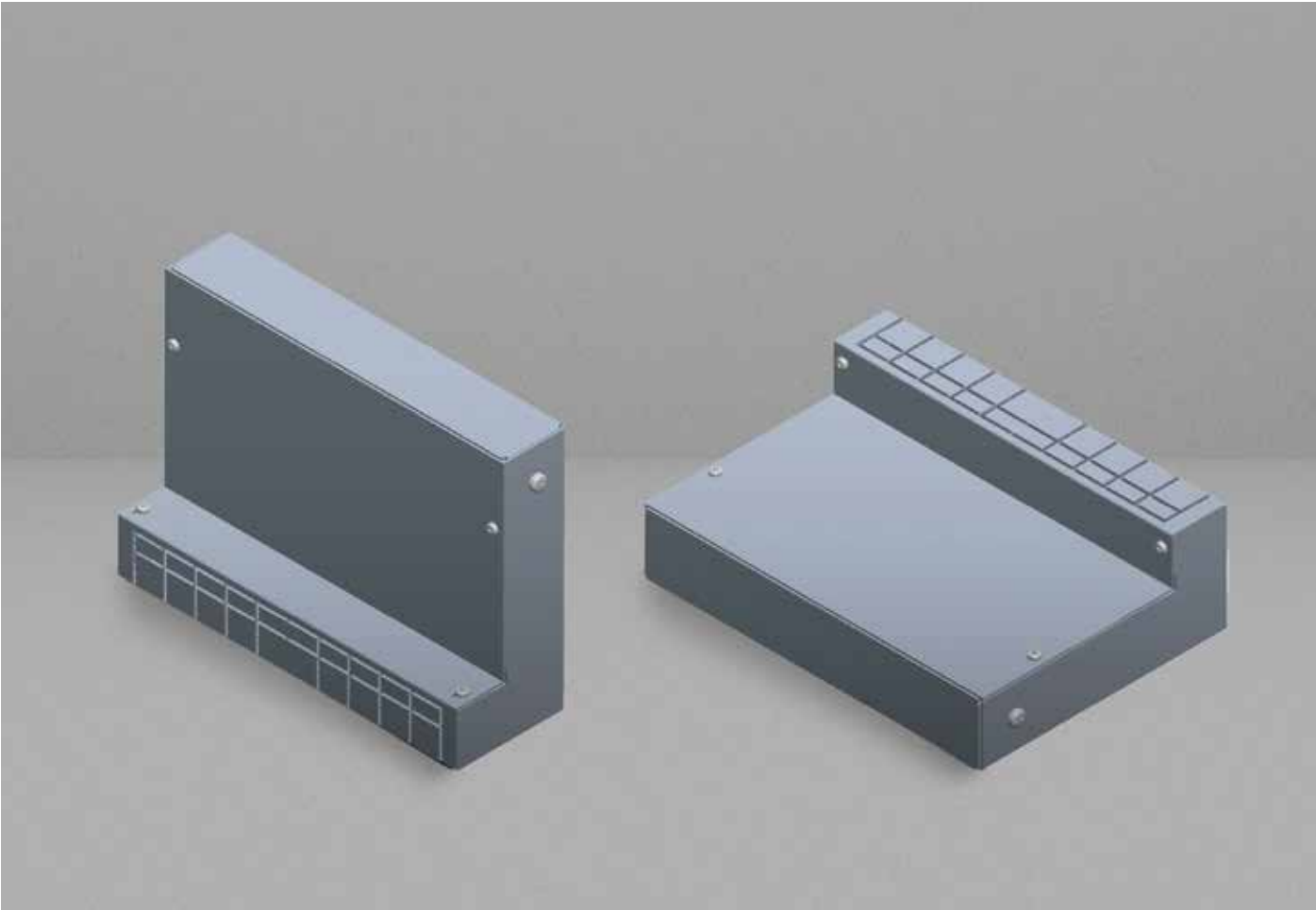
This is for connections to Distribution boards or other Floors



Vertical access box in epoxy powder coating



Available in 250 mm, 300 mm & 350 mm sizes

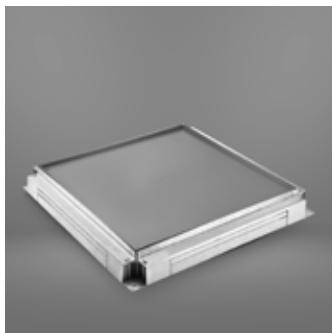


## PRODUCT RANGE

ITEM CODE	ITEM DESCRIPTION
VABRC2FML250	Vertical Access Box 250x200x45mm
VABRC2FML300	Vertical Access Box 300x200x45mm
VABRC2FML350	Vertical Access Box 350x200x45mm



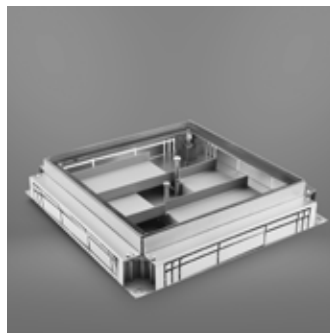
## UNDERFLOOR CROSS OVER & JUNCTION BOX



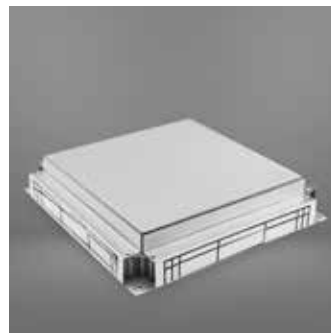
Junction Box



Junction Box



Crossover Junction Box



Crossover Junction Box with SS lid

### Product details & application:

- Honeywell Cross Overs and Junction Boxes are fabricated from high quality materials, to withstand heavy load and corrosion.
  - The Cover Plate for Junction Boxes & Cross Over Junction Boxes are made of a 2.5mm thick epoxy powder coated lid, and include an 8mm recess, to assist with the installation of carpets and tiles.
  - The Trap Frame (angle frame) for the Junction Box and Cross Over
- Junction Box is made of a 1.5mm thick epoxy powder coated frame, to provide rigidity and added strength.
- The Base Unit of the Junction Box and Cross Over Junction Box is made of high quality pre-galvanized steel and high-pressure die-cast aluminum pillars, to provide support for the Trap Frame and Side Blanks.
  - The Flyover Unit, Trap Frame and Traps are epoxy coated, to give enhanced protection to visible parts, against chemical or saline corrosion.
- Trap Cover screws are made from Stainless Steel for extra protection.
  - Brass Terminals are provided for an earthing connection.
  - Four Side Blanks are made with removable perforation, to accept Tracks of up to 38mm height.
  - The one-piece Frame design ensures minimum openings to prevent concrete seepage into the box during pouring of concrete or screeding.

## UNDERFLOOR CROSS OVER & JUNCTION BOX

### TECHNICAL SPECIFICATION

Load bearing capacity	Junction box & crossover junction box can withstand a maximum load of 2.5 ton/m <sup>2</sup>
-----------------------	--

## PRODUCT RANGE

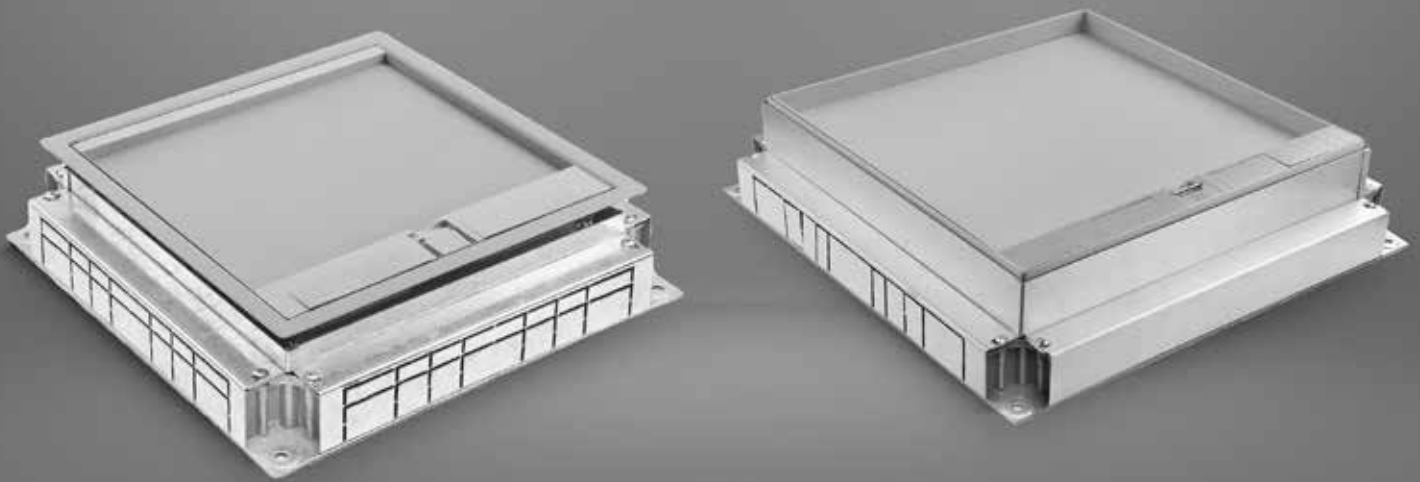
CAT. NO.	DESCRIPTION
CJBQADNML150	CJB 150x150x55-70mm Rec-8mm 120GSM-Base
CJBQADNML250	CJB 250x250x55-70mm Rec-8mm 120GSM-Base
CJBQADNML300	CJB 300x300x55-70mm Rec-8mm 120GSM-Base
CJBQADNML350	CJB 350x350x55-70mm Rec-8mm 120GSM-Base
CJBQA0ISS150	CJB 150x150x55-70mm SS Lid 120GSM-Base
CJBQA0ISS250	CJB 250x250x55-70mm SS Lid 120GSM-Base
CJBQA0ISS300	CJB 300x300x55-70mm SS Lid 120GSM-Base
CJBQA0ISS350	CJB 350x350x55-70mm SS Lid 120GSM-Base
JBOQADIML150	JB 150x150x55-70mm Rec-8mm 120GSM-Base
JBOEADIML225	JB 225x225x65-80mm Rec-8mm 120GSM-Base
JBOQADIML250	JB 250x250x55-70mm Rec-8mm 120GSM-Base
JBOQADIML300	JB 300x300x55-70mm Rec-8mm 120GSM-Base
JBOQADIML350	JB 350x350x55-70mm Rec-8mm 120GSM-Base



# ACCESS OUTLET BOX

## | Designed for Easy Maintenance and Retro-Installation

Access Outlet Box for under floor cable management and distribution of power, data and communications cables. AOB provides easy access to power & data communication from the floor. Availability of lid with 8mm & 20mm recess to accept tile / carpet / marble / stone flooring.



## FEATURES



Superior load bearing performance of up to 2.5 tons, ensures that the product can withstand heavy objects like cabinets, trolleys, cherry pickers and even automobiles in a showroom.



These floor boxes are adaptable to any floor finish with height adjusting stainless steel leveling screws. There is a provision of 15mm from 65mm minimum to 80mm maximum & 90mm minimum to 105mm maximum for plug top clearance



AOB is completely flush with any type of floor. Tile, carpet, marble, and stone flooring installation is simple when using an 8mm or 20mm recess in AOB.





These floor boxes are designed for use with stone floors. The lid recess comes with 20mm space for accommodating any hard flooring



Double grommet openings for connecting the output cables to the wiring accessories

## ACCESSORIES



**Access Outlet Box  
8mm Recess**



**Access Outlet Box**



**Access Outlet Box  
20mm Recess**



**Access Outlet Box**

## APPLICATION AREAS



**Retail Malls**



**Parking Areas**



**Bungalows**



**Exhibition Halls**

## PRODUCT RANGE

CAT. NO.	DESCRIPTION
AOBQADJML150	AOB 150x150x65-80mm Rec-8mm 120GSM-Base
AOBEADJML225	AOB 225x225x65-80mm Rec-8mm 120GSM-Base
AOBQADJML250	AOB 250x250x65-80mm Rec-8mm 120GSM-Base
AOBQADJML300	AOB 300x300x65-80mm Rec-8mm 120GSM-Base
AOBQADJML350	AOB 350x350x65-80mm Rec-8mm 120GSM-Base
AOBQAELML150	AOB 150x150x90-105mm Rec-20mm 120GSM-Base
AOBQAELML250	AOB 250x250x90-105mm Rec-20mm 120GSM-Base
AOBQAELML300	AOB 300x300x90-105mm Rec-20mm 120GSM-Base
AOBQAELML350	AOB 350x350x90-105mm Rec-20mm 120GSM-Base





# RAISED FLOOR ACCESS OUTLET BOX

## | Flushed Design with No Flooring Recess

The Honeywell Access Outlet Box are uniquely designed with easy to install features by means of a stylish flushed top cover. They enhance the visual appeal of the commercial space with excellent brush finish. Made of stainless steel, the boxes are robust, seepage proof and can function smoothly forever.



SS Raised Floor Box



SS Raised Floor Box  
Internal View



Raised Floor Box



Raised Floor Box  
Internal View

## FEATURES



Flushed design;  
no flooring  
recess required



Smart looking  
stainless steel boxes  
with brush finish



Flexible cable  
exits for cable  
protection

## APPLICATION AREAS



Airports



Retail Malls



Hospitals



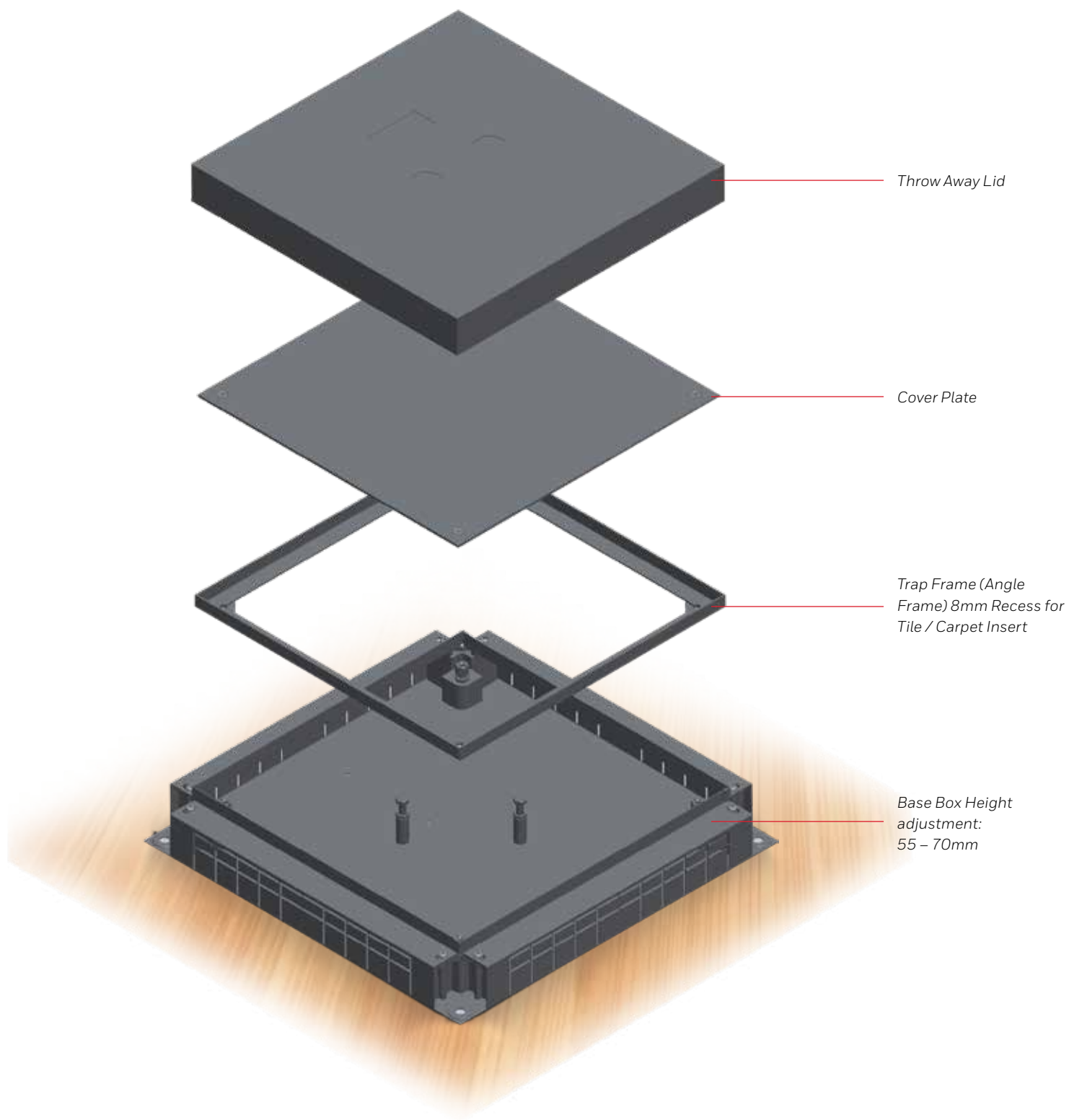
Corporates (IT/ITES)

## PRODUCT RANGE

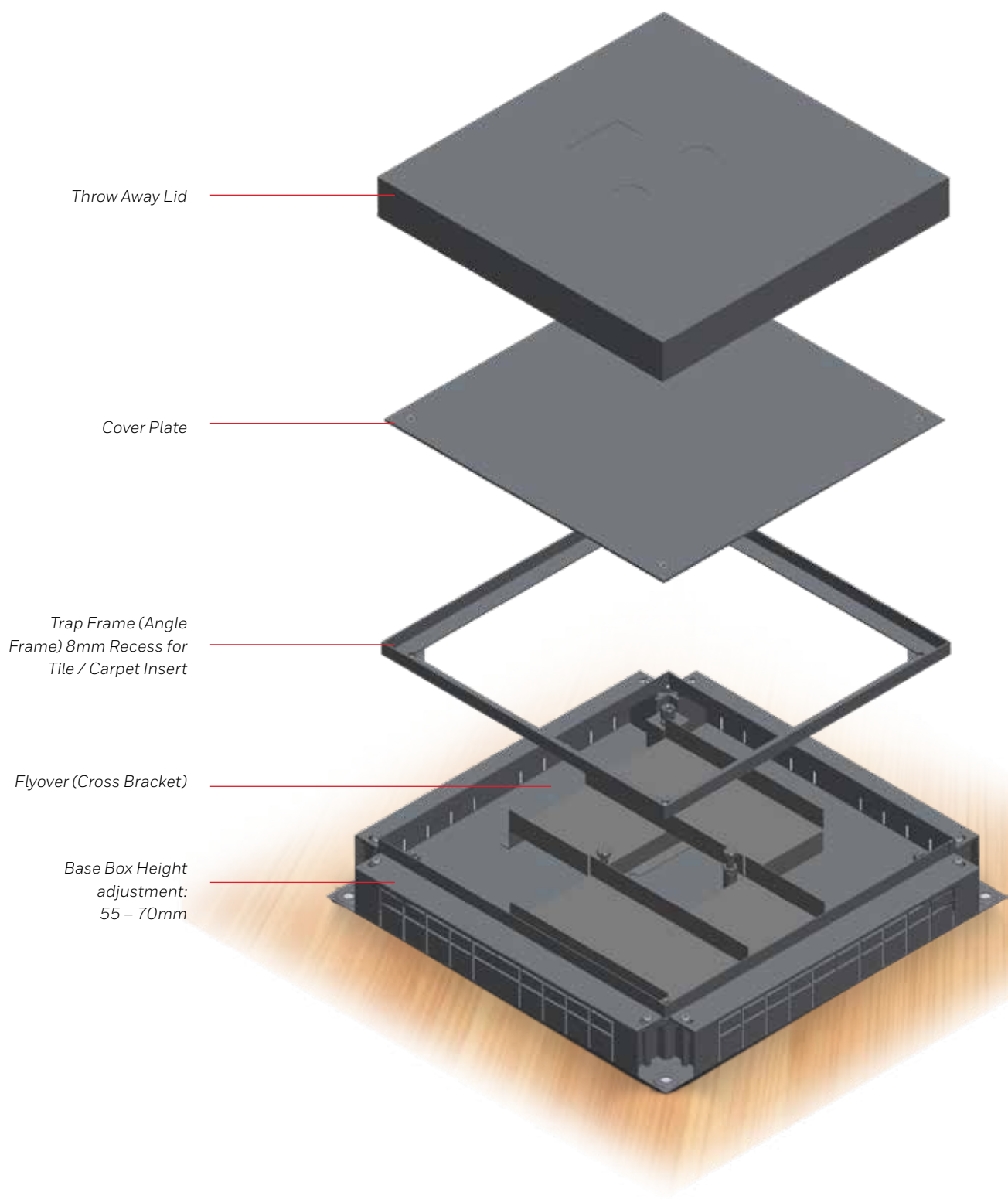
ITEM CODE	ITEM DESCRIPTION
RFBQADHML250	RFB 250x250x80mm Rec-8mm 120GSM-Base
RFBQA0HSS250	RFB 250x250x80mm SS Lid 120GSM-Base

## Installation Process

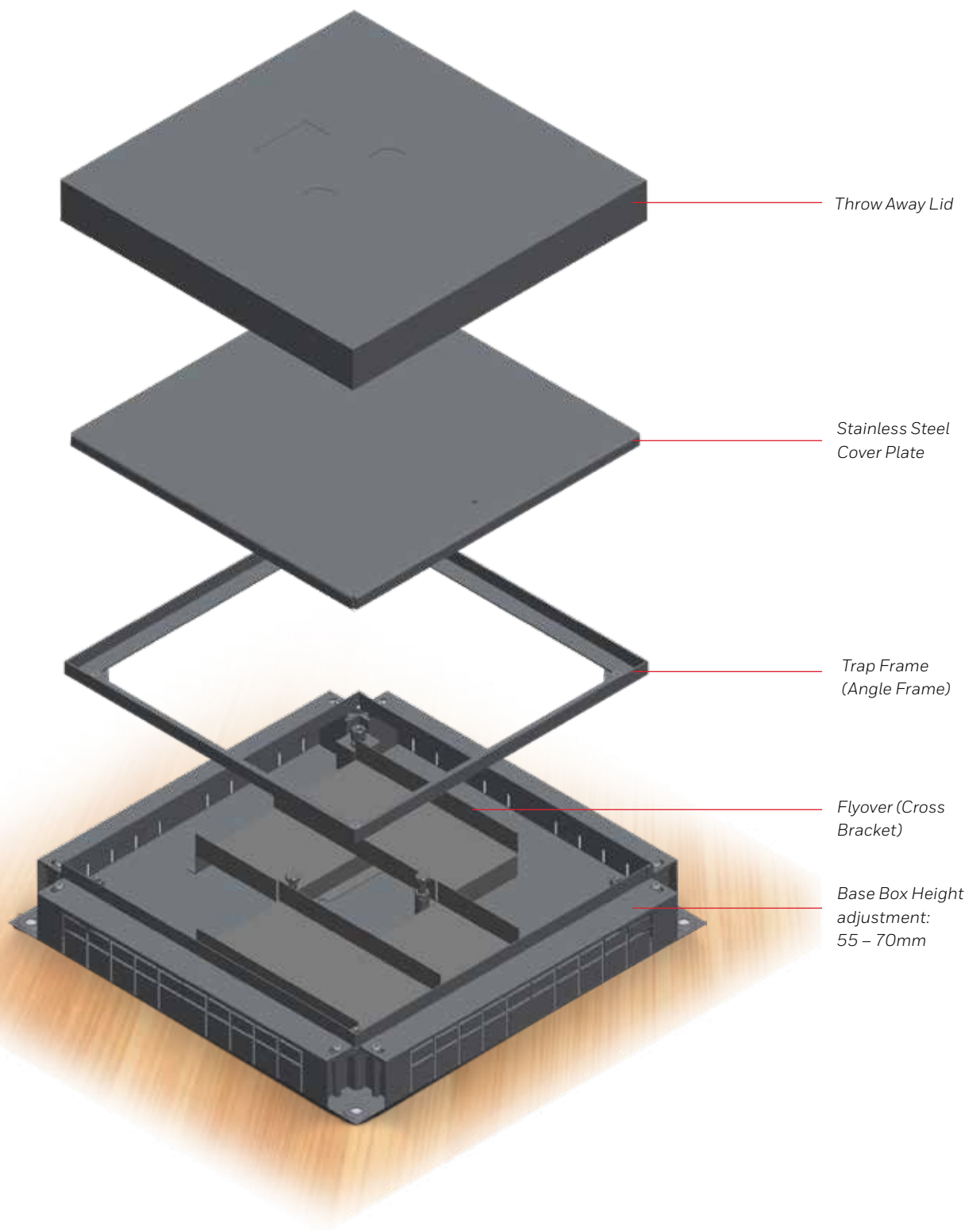
JBOQADIMLXXX



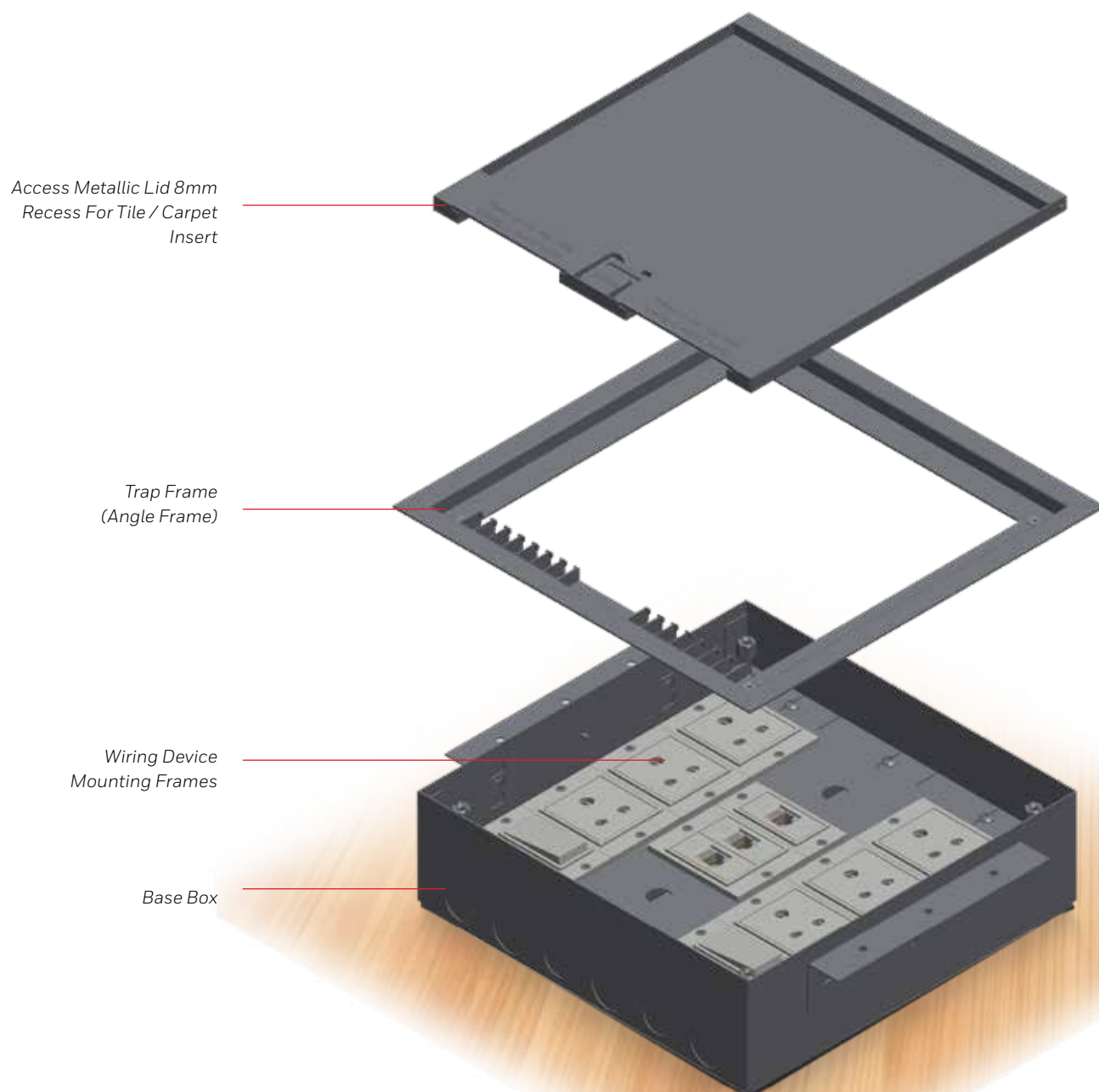
CJBQADNMLXXX



CJBQA0ISSXXX



## RFBQADHML250

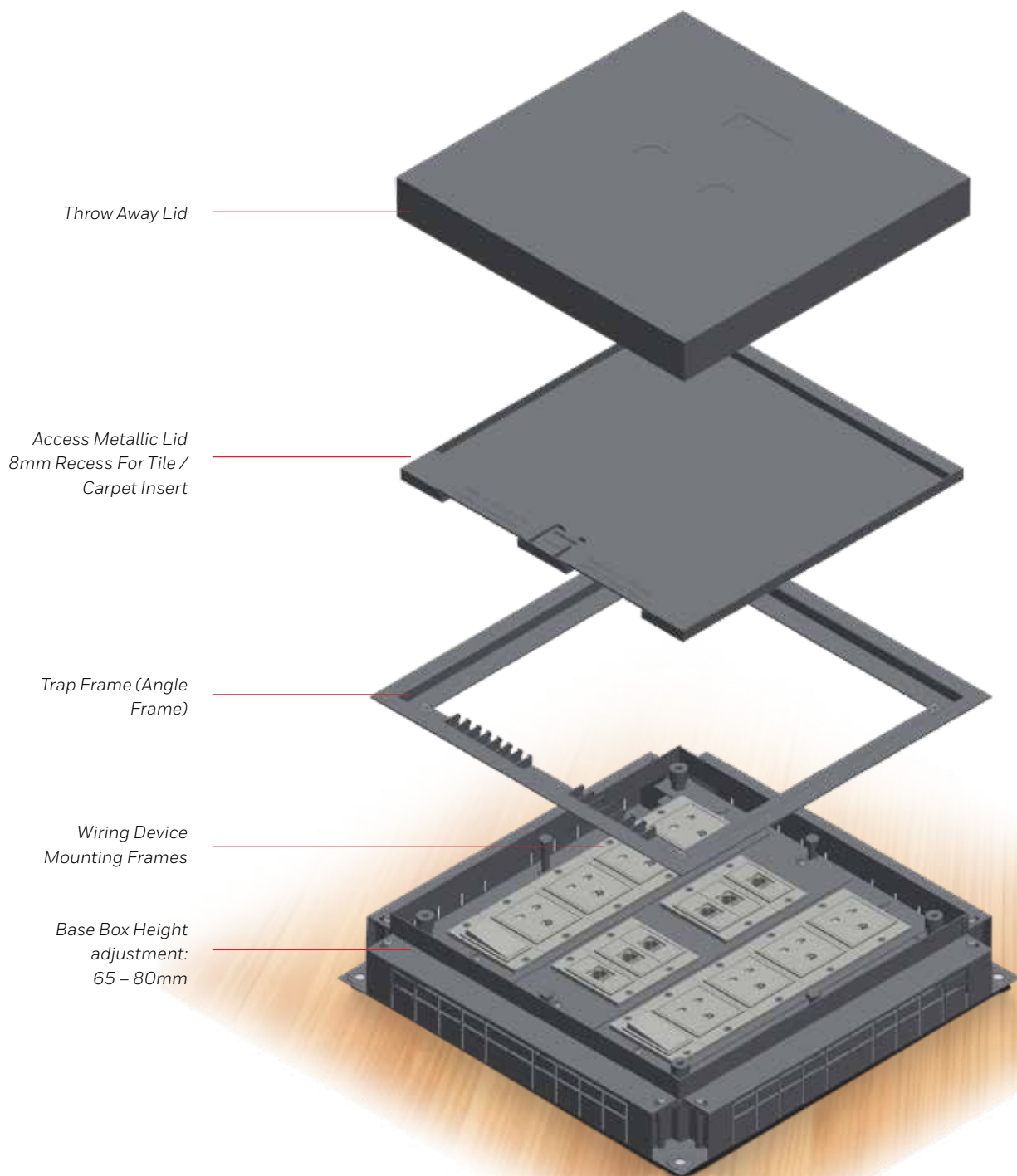




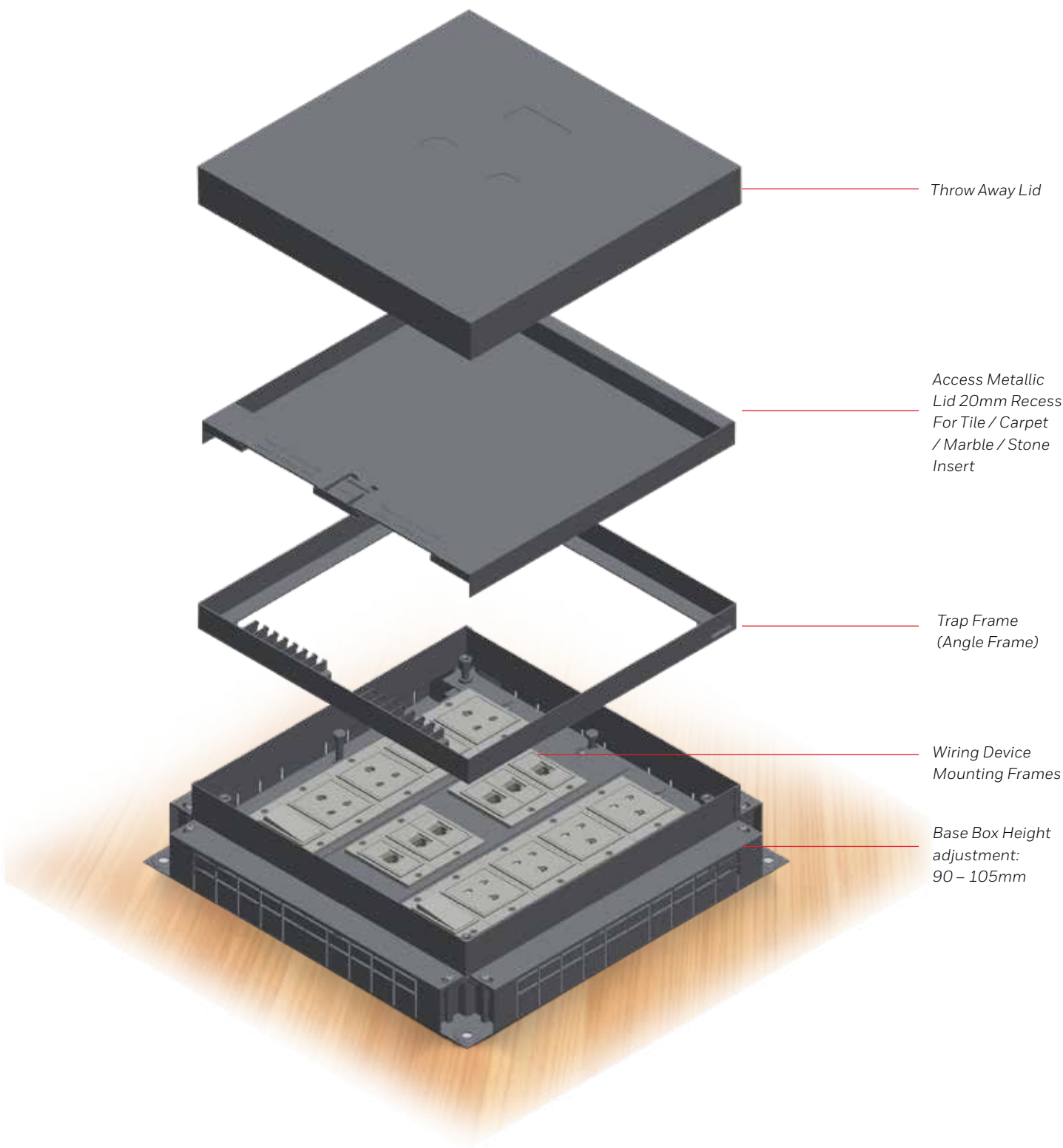
RFBQA0HSS250



AOBQADJMLXXX



AOBQAELMLXXX



## CABLE CAPACITY GUIDE

CAPACITY: MAXIMUM NO. OF CONDUCTORS PER COMPARTMENT (FOR ONE SPECIFIC CABLE TYPE)							
			PVC STRANDED				
ITEM CODE	TRUNKING OUTER SIZE	AVAILABLE SECTION AT 45% FILL MM <sup>2</sup>	1.5 <sup>2</sup> Ø3.3	2.5 <sup>2</sup> Ø4	4 <sup>2</sup> Ø4.6	6 <sup>2</sup> Ø5.2	10 <sup>2</sup> Ø6.7
UTQB050138	50 x 38	683	79	54	41	32	19
UTQB075138	75 x 38	1074	124	85	64	50	30
UTQB100138	100 x 38	1466	170	116	87	68	41
UTRB050138	50x38	663	77	52	40	31	19
UTRB075138	75x38	1050	122	83	63	49	30
UTRB100138	100x38	1437	166	113	86	67	40
UTSB050138	50x38	643	74	51	38	30	18
UTSB075138	75x38	1025	119	81	61	48	29
UTSB100138	100x38	1408	163	111	84	66	40
UTQB100238	100x38	725	84	57	43	34	20
		725	84	57	43	34	20
UTQB150238	150x38	1117	129	88	67	52	31
		1117	129	88	67	52	31
UTRB100238	100x38	711	82	56	42	33	20
		711	82	56	42	33	20
UTRB150238	150x38	1098	127	87	65	51	31
		1098	127	87	65	51	31
UTSB100238	100x38	696	81	55	42	32	20
		696	81	55	42	32	20
UTSB150238	150x38	1079	125	85	64	50	30
		1079	125	85	64	50	30
UTQB225338	225x38	1131	131	89	67	53	32
		1131	131	89	67	53	32
		1131	131	89	67	53	32
UTQB250338	250x38	1261	146	99	75	59	35
		1261	146	99	75	59	35
		1261	146	99	75	59	35
UTQB300338	300x38	1522	176	120	91	71	43
		1522	176	120	91	71	43
		1522	176	120	91	71	43
UTQB350338	350x38	1783	207	141	106	83	50
		1783	207	141	106	83	50
		1783	207	141	106	83	50
UTRB225338	225x38	1114	129	88	66	52	31
		1114	129	88	66	52	31
		1114	129	88	66	52	31
UTRB250338	250x38	1243	144	98	74	58	35
		1243	144	98	74	58	35
		1243	144	98	74	58	35
UTRB300338	300x38	1501	174	118	89	70	42
		1501	174	118	89	70	42
		1501	174	118	89	70	42
UTRB350338	350x38	1759	204	139	105	82	49
		1759	204	139	105	82	49
		1759	204	139	105	82	49
UTSB225338	225x38	1097	127	86	65	51	31
		1097	127	86	65	51	31
		1097	127	86	65	51	31

			TWIN & EARTH			DATA CABLES			
	16 <sup>2</sup> Ø7.8	25 <sup>2</sup> Ø9.7	2.5 <sup>2</sup> Ø10.5	4 <sup>2</sup> Ø11.2	6 <sup>2</sup> Ø13.7	CAT. 5e UTP Ø5.5	CAT. 5e STP Ø6	CAT. 6 UTP Ø6.7	CAT. 6 STP Ø7
	14	9	8	7	5	22	19	16	14
	22	14	12	11	7	35	29	25	22
	30	20	17	15	10	48	40	35	30
	14	9	8	7	4	22	18	16	13
	22	14	12	11	7	34	29	25	21
	30	19	16	14	10	47	39	34	29
	13	9	7	6	4	21	18	15	13
	21	14	12	10	7	34	28	24	21
	29	19	16	14	9	46	38	33	28
	15	10	8	7	5	24	20	17	15
	15	10	8	7	5	24	20	17	15
	23	15	13	11	8	37	30	26	23
	23	15	13	11	8	37	30	26	23
	15	10	8	7	5	23	19	17	14
	15	10	8	7	5	23	19	17	14
	23	15	13	11	7	36	30	26	22
	23	15	13	11	7	36	30	26	22
	14	9	8	7	5	23	19	16	14
	14	9	8	7	5	23	19	16	14
	22	14	12	11	7	35	29	26	22
	22	14	12	11	7	35	29	26	22
	23	15	13	11	8	37	31	27	23
	23	15	13	11	8	37	31	27	23
	23	15	13	11	8	37	31	27	23
	26	17	14	13	8	41	34	30	25
	26	17	14	13	8	41	34	30	25
	26	17	14	13	8	41	34	30	25
	32	20	17	15	10	50	42	36	31
	32	20	17	15	10	50	42	36	31
	32	20	17	15	10	50	42	36	31
	37	24	20	18	12	59	49	42	36
	37	24	20	18	12	59	49	42	36
	37	24	20	18	12	59	49	42	36
	23	15	13	11	7	37	30	26	23
	23	15	13	11	7	37	30	26	23
	23	15	13	11	7	37	30	26	23
	26	17	14	12	8	41	34	29	25
	26	17	14	12	8	41	34	29	25
	26	17	14	12	8	41	34	29	25
	31	20	17	15	10	49	41	36	30
	31	20	17	15	10	49	41	36	30
	31	20	17	15	10	49	41	36	30
	36	24	20	18	12	58	48	42	36
	36	24	20	18	12	58	48	42	36
	36	24	20	18	12	58	48	42	36
	23	15	13	11	7	36	30	26	22
	23	15	13	11	7	36	30	26	22
	23	15	13	11	7	36	30	26	22



## CABLE CAPACITY GUIDE

CAPACITY: MAXIMUM NO. OF CONDUCTORS PER COMPARTMENT (FOR ONE SPECIFIC CABLE TYPE)							
			PVC STRANDED				
ITEM CODE	TRUNKING OUTER SIZE	AVAILABLE SECTION AT 45% FILL MM <sup>2</sup>	1.5 <sup>2</sup> Ø3.3	2.5 <sup>2</sup> Ø4	4 <sup>2</sup> Ø4.6	6 <sup>2</sup> Ø5.2	10 <sup>2</sup> Ø6.7
UTSB250338	250x38	1224	142	97	73	57	34
		1224	142	97	73	57	34
		1224	142	97	73	57	34
UTSB300338	300x38	1479	171	117	88	69	42
		1479	171	117	88	69	42
		1479	171	117	88	69	42
UTSB350338	350x38	1734	201	137	103	81	49
		1734	201	137	103	81	49
		1734	201	137	103	81	49
UTQB050125	50x25	428	50	34	26	20	12
UTQB075125	75x25	673	78	53	40	31	19
UTQB100125	100x25	918	106	72	55	43	26
UTQB150225	150x25	699	81	55	42	33	20
		699	81	55	42	33	20
UTQB225325	225x25	708	82	56	42	33	20
		708	82	56	42	33	20
		708	82	56	42	33	20
UTQB250325	250x25	790	92	62	47	37	22
		790	92	62	47	37	22
		790	92	62	47	37	22
UTQB300325	300x25	954	110	75	57	44	27
		954	110	75	57	44	27
		954	110	75	57	44	27
UTQB350325	350x25	1117	129	88	67	52	31
		1117	129	88	67	52	31
		1117	129	88	67	52	31

			TWIN & EARTH			DATA CABLES			
	16 <sup>2</sup> Ø7.8	25 <sup>2</sup> Ø9.7	2.5 <sup>2</sup> Ø10.5	4 <sup>2</sup> Ø11.2	6 <sup>2</sup> Ø13.7	CAT. 5e UTP Ø5.5	CAT. 5e STP Ø6	CAT. 6 UTP Ø6.7	CAT. 6 STP Ø7
	25	16	14	12	8	40	33	29	25
	25	16	14	12	8	40	33	29	25
	25	16	14	12	8	40	33	29	25
	31	20	17	15	10	49	40	35	30
	31	20	17	15	10	49	40	35	30
	31	20	17	15	10	49	40	35	30
	36	23	20	17	12	57	47	41	35
	36	23	20	17	12	57	47	41	35
	36	23	20	17	12	57	47	41	35
	9	6	5	4	3	14	12	10	9
	14	9	8	7	5	22	18	16	14
	19	12	11	9	6	30	25	22	19
	15	9	8	7	5	23	19	17	14
	15	9	8	7	5	23	19	17	14
	15	9	8	7	5	23	19	17	14
	15	9	8	7	5	23	19	17	14
	15	9	8	7	5	23	19	17	14
	16	11	9	8	5	26	22	19	16
	16	11	9	8	5	26	22	19	16
	16	11	9	8	5	26	22	19	16
	20	13	11	10	6	31	26	23	19
	20	13	11	10	6	31	26	23	19
	20	13	11	10	6	31	26	23	19
	23	15	13	11	8	37	30	26	23
	23	15	13	11	8	37	30	26	23
	23	15	13	11	8	37	30	26	23



# DESK CABLE MANAGEMENT

| Streamlined Workstations for Enhanced Productivity







# POP UP BOX

## | Enabling Easy Device Connectivity

The Honeywell flush mounting Pop-up Boxes help you connect your laptops, mobile phones and electronic devices easily, in meeting rooms. Made with stainless steel traps and aluminum-alloy base, they come in 3, 4, 6 and 8 module configurations. The super slim ergonomic design adds to the aesthetics of your meeting rooms



3M Pop Up Box



6M Pop Up Box



8M Pop Up Box

## FEATURES



Available in variants of 3, 4, 6 & 8 modules



Soft pop up opening



The top lid panel is made of aluminium alloy



The base box is made of steel+Zinc

## PRODUCT RANGE

ITEM CODE	ITEM DESCRIPTION
EP03AL	Pop Up Box 3M
EP04AL	Pop Up Box 4M
EP06AL	Pop Up Box 6M
EP08AL	Desking module 8M with AV / HDMI
EP08AL2	Desking module 8M



APPLICATION AREAS



Meeting Rooms



Individual Desk



Airports



Hotels



Malls

TECHNICAL SPECIFICATION	
Function	Power socket, communication/data access, VGA, HDMI access on table top
Electrical Specification *	6A 250V~
IP Rating	IP20
Load Specification	6A 250V~
Materials	Panel: Y108 Alu. alloy Frame/Supporting plate:Zinc alloy Amounting plate: PC



# NOTES

**BACK COVER  
INSIDE  
PAGE**

#### **BARODA**

Ground Floor, 1965,  
Alembic City Avenue,  
Alembic Campus, Alembic Road,  
Vadodara - 390 003

#### **CHENNAI**

5<sup>th</sup>, 6<sup>th</sup> & 7<sup>th</sup> Floor,  
KRM Plaza, North Tower,  
#2 Harrington Road, Chetpet,  
Chennai - 600 031

#### **HYDERABAD**

8-2-418, Krishnama House,  
3<sup>rd</sup> Floor, Road No. 7,  
Banjara Hills,  
Hyderabad - 500 034

#### **MUMBAI**

Times square, E-wing, 10th Floor,  
Andheri - Kurla Rd., Gamdevi,  
Marol, Andheri East,  
Mumbai- 400059

#### **BENGALURU**

Honeywell Camp II,  
Bldgs 9A & 9B, Plot C2, RMZ Ecoworld,  
Varturhobli, Sarjapur Marathahalli,  
Outer Ring Road,  
Bengaluru - 560 103

#### **GURUGRAM**

Unitech Trade Center,  
Sector 43, Block C,  
Sushant Lok, Phase 1,  
Gurgaon - 122 022

#### **KOLKATA**

Unit Number-1205, 12<sup>th</sup> Floor,  
Godrej Waterside Tower-2,  
DP Block, Sector-V, Salt Lake,  
Kolkata - 700 091

#### **PUNE**

Plot No. 56/57,  
Hadapsar Industrial Estate,  
Pune - 411 013

#### **FOR FURTHER DETAILS, PLEASE REACH US AT :**

Toll Free Number: 1800-103-3848

Monday to Sunday: 10AM - 7PM

Email: [BuildingAutomation.BMSIndia@honeywell.com](mailto:BuildingAutomation.BMSIndia@honeywell.com)

Website: [www.honeywellbuildings.in/electrical-products](http://www.honeywellbuildings.in/electrical-products)

**THE  
FUTURE  
IS  
WHAT  
WE  
MAKE IT**